

# LYSMD3 antibody



Catalog Number: 112413

## Product name

LYSMD3 antibody

## Immunogen

[Human LYSMD3 Recombinant protein \(GST tag\)](#)

## Specificity

Human, Mouse; other species not tested.

## Antibody description

LYSMD3 Rabbit Polyclonal antibody. Positive WB detected in Neuro-2a cells. Observed molecular weight by Western-blot: 35 kDa

## Preparation

This antibody was obtained by immunization of LYSMD3 recombinant protein (Accession Number: NM\_198273). Purification method: Antigen affinity purified.

## Formulation

PBS with 0.1% sodium azide and 50% glycerol pH 7.3.

## Storage

Store at -20°C. DO NOT ALIQUOT

## Clonality

Polyclonal

## Ig Type

Rabbit IgG

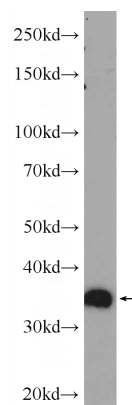
## Applications

ELISA, WB

## Dilutions

Recommended Dilution:  
WB: 1:200-1:1000

## Validations



Neuro-2a cells were subjected to SDS PAGE followed by western blot with Catalog No:112413(LYSMD3 Antibody) at dilution of 1:300