

# XDH Polyclonal Antibody



Catalog Number: 161413

## Product name

XDH Polyclonal Antibody

## Specificity

Mouse

## Antibody description

Polyclonal antibody to XDH

## Preparation

Antigen: Recombinant fusion protein containing a sequence corresponding to amino acids 1-280 of human XDH (NP\_000370.2).

## Formulation

PBS with 0.02% sodium azide, 50% glycerol, pH7.3.

## Storage

Store at -20°C. Avoid freeze / thaw cycles.

## Clonality

Polyclonal

## Ig Type

Rabbit IgG

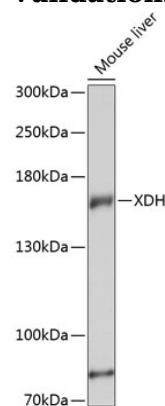
## Applications

WB

## Dilutions

WB 1:500 - 1:2000

## Validations



## Western blot - XDH Polyclonal Antibody

Western blot analysis of extracts of mouse liver, using XDH antibody at 1:3000 dilution. Secondary antibody: HRP Goat Anti-Rabbit IgG (H+L) at 1:10000 dilution. Lysates/proteins: 25ug per lane. Blocking buffer: 3% nonfat dry milk in TBST. Detection: ECL Enhanced Kit. Exposure time: 30s.