

Human Autotaxin/ENPP2 (His Tag) recombinant protein



Catalog Number: 500413

General Information

Gene Name Synonym

Autotaxin; Extracellular lysophospholipase D

Protein Construction

A DNA sequence encoding the mature form of human ENPP2 (AAH34961.1) (Asp 49-Ile 863) was expressed, with a polyhistidine tag at the N-terminus.

Organism

Human

Expression Host

Human Cells

QC Testing

Purity

> 88 % as determined by SDS-PAGE

Endotoxin

< 1.0 EU per μ g of the protein as determined by the LAL method

Stability

Samples are stable for up to twelve months from date of receipt at -70°C

Predicted N terminal

His

Molecular Mass

The recombinant human ENPP2 consists of 834

amino acids and has a calculated molecular mass of 96 kDa. In SDS-PAGE under reducing conditions, the apparent molecular mass of rhENPP2 is approximately 120-130 kDa due to glycosylation.

Formulation

Lyophilized from sterile PBS, pH 7.4

1. 5 % trehalose and mannitol are added as protectants before lyophilization.

2. Please contact us for any concerns or special requirements.

Usage Guide

Storage

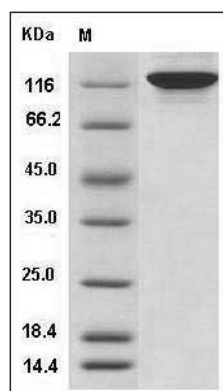
Store it under sterile conditions at -20°C to -80°C.

It is recommended that the protein be aliquoted for optimal storage. Avoid repeated freeze-thaw cycles.

Reconstitution

Adding sterile water, prepare a stock solution of 0.25 mg/ml. Concentration is measured by UV-Vis.

SDS-PAGE



Human Autotaxin / ENPP2 / NPP2 Protein (His Tag) SDS-PAGE