

# Cytokeratin 8 antibody



Catalog Number: 107013

## Product name

Cytokeratin 8 antibody

## Specificity

Human; other species not tested.

## Antibody description

Cytokeratin 8 Rabbit Polyclonal antibody. Positive WB detected in MCF7 cells, A431 cells, A549 cells. Positive IF detected in HepG2 cells. Positive IHC detected in human lung cancer tissue, human breast cancer tissue, human colon cancer tissue, human colon tissue, human liver tissue, human oesophagus cancer tissue, human prostate cancer tissue, human stomach tissue. Positive FC detected in HeLa cells. Observed molecular weight by Western-blot: 54 kDa

## Preparation

This antibody was obtained by immunization of Peptide (Accession Number: NM\_002273). Purification method: Antigen affinity purified.

## Formulation

PBS with 0.02% sodium azide and 50% glycerol pH 7.3.

## Storage

Store at -20°C. DO NOT ALIQUOT

## Clonality

Polyclonal

## Ig Type

Rabbit IgG

## Applications

ELISA, WB, IF, FC, IHC

## Dilutions

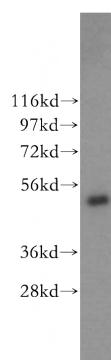
Recommended Dilution:

WB: 1:200-1:2000

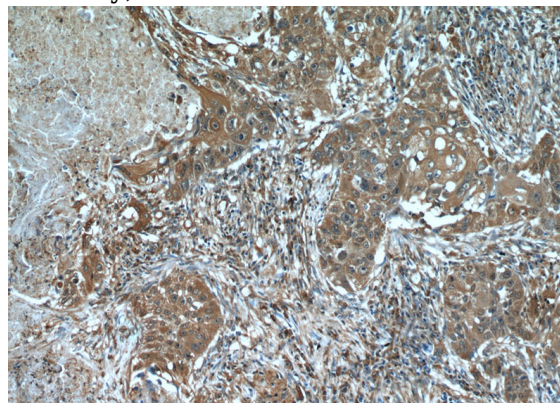
IHC: 1:20-1:200

IF: 1:20-1:200

## Validations



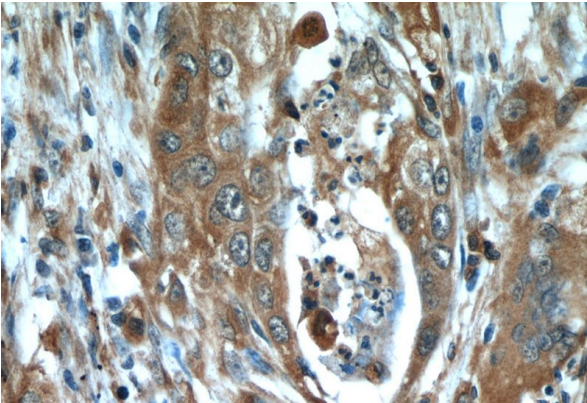
MCF7 cells were subjected to SDS PAGE followed by western blot with Catalog No:109814(KRT8 antibody) at dilution of 1:300



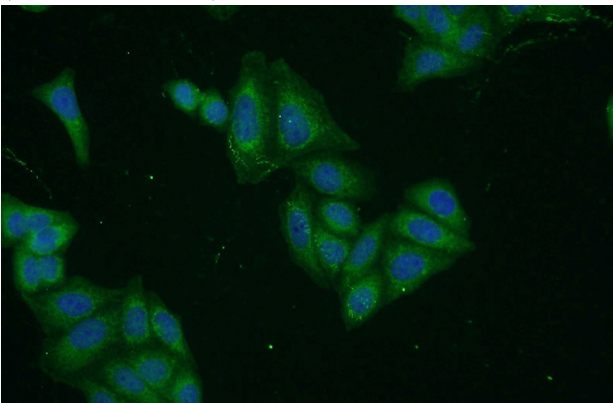
Immunohistochemical of paraffin-embedded human lung cancer using Catalog No:109814(KRT8 antibody) at dilution of 1:50 (under 10x lens)

# Cytokeratin 8 antibody

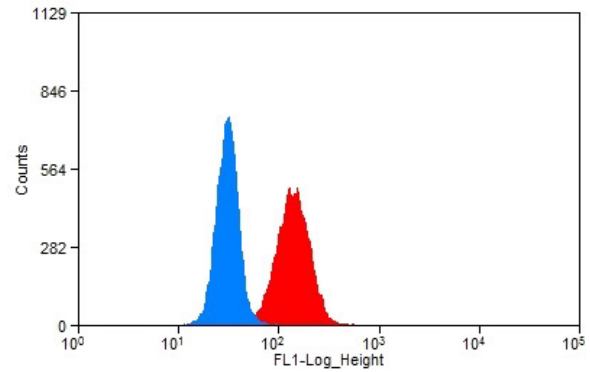
Catalog Number: 107013



Immunohistochemical of paraffin-embedded human lung cancer using Catalog No:109814(KRT8 antibody) at dilution of 1:50 (under 40x lens)



Immunofluorescent analysis of HepG2 cells using Catalog No:109814(KRT8 Antibody) at dilution of 1:50 and Alexa Fluor 488-conjugated AffiniPure Goat Anti-Rabbit IgG(H+L)



1X10<sup>6</sup> HeLa cells were stained with 0.2ug KRT8 antibody (Catalog No:109814, red) and control antibody (blue). Fixed with 90% MeOH blocked with 3% BSA (30 min). Alexa Fluor 488-conjugated AffiniPure Goat Anti-Rabbit IgG(H+L) with dilution 1:1500.