

Anti-RBM15/OTT1 antibody



Catalog Number: 105013

Product name

Anti-RBM15/OTT1 antibody

Specificity

Human RBM15 / OTT1

Antibody description

Rabbit polyclonal to RBM15/OTT1

Preparation

Produced in rabbits immunized with a synthetic peptide corresponding to the center region of the Human RBM15 / OTT1, and purified by antigen affinity chromatography.

Formulation

0.2 µm filtered solution in PBS

Storage

This antibody can be stored at 2°C-8°C for one month without detectable loss of activity. Antibody products are stable for twelve months from date of receipt when stored at -20°C to -80°C.

Preservative-Free.

Sodium azide is recommended to avoid contamination (final concentration 0.05%-0.1%). It is toxic to cells and should be disposed of properly. Avoid repeated freeze-thaw cycles.

Clonality

Polyclonal

Ig Type

Rabbit IgG

Applications

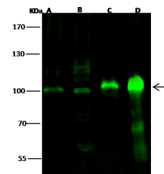
WB, IP

Dilutions

WB: 5-10 µg/ml

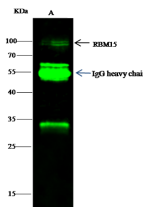
IP: 0.5-2 uL/mg of lysate

Validations



Lanes	A	B	C	D
Items	HeLa (whole cell lysate)	AA31 (whole cell lysate)	Mouse heart tissue lysate	Rat brain tissue lysate
Sample Volume (µg/lane)	30	30	30	30
Gel	7.5% SDS-PAGE reducing gel			
Recommended Concentration	5-10 µg/ml			
Secondary Antibody	Dylight 800 labeled Antibody to Rabbit IgG (H+L), at 1:5000 dilution.			
Explanation	Developed using Odyssey imaging system. Predicted band size: 107 kDa Observed band size: 100 kDa Additional bands at: 118 kDa, 70 kDa and 60 kDa (We are unsure as to the identity of these extra bands.)			

RBM15 / OTT1 Antibody, Rabbit PAb, Antigen Affinity Purified, Western blot



Lanes	A
Items	Jurkat
Sample (whole cell lysate)	
Sample quantity	0.5 mg
IP antibody quantity	2 µg
Immunospecific bands Protein (k)	60 ng
Gel	13% SDS-PAGE reducing gel
Primary antibody	KJ21-SMCC-SINO1269 antibody at 10 µg/ml
Secondary antibody	Dylight 800-labeled antibody to rabbit IgG (H+L), at 1:5000 dilution

RBM15 / OTT1 Antibody, Rabbit PAb, Antigen Affinity Purified, Immunoprecipitation