

# SLC34A1 Polyclonal Antibody



Catalog Number: 165013

## Product name

SLC34A1 Polyclonal Antibody

## Specificity

Human, Mouse, Rat

## Antibody description

Polyclonal antibody to SLC34A1

## Preparation

Antigen: Recombinant fusion protein containing a sequence corresponding to amino acids 1-103 of human SLC34A1 (NP\_003043.3).

## Formulation

PBS with 0.02% sodium azide, 50% glycerol, pH7.3.

## Storage

Store at -20°C. Avoid freeze / thaw cycles.

## Clonality

Polyclonal

## Ig Type

Rabbit IgG

## Applications

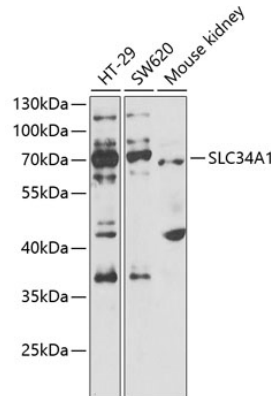
WB, IF

## Dilutions

WB 1:500 - 1:2000

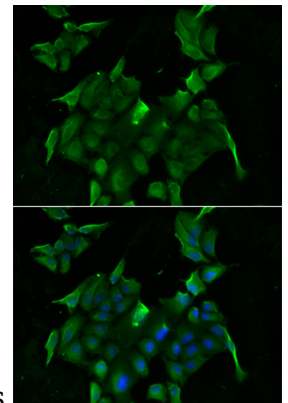
IF 1:10 - 1:100

## Validations



Western blot - SLC34A1 Polyclonal Antibody

Western blot analysis of extracts of various cell lines, using SLC34A1 antibody at 1:1000 dilution. Secondary antibody: HRP Goat Anti-Rabbit IgG (H+L) at 1:10000 dilution. Lysates/proteins: 25ug per lane. Blocking buffer: 3% nonfat dry milk in TBST. Detection: ECL



Basic Kit .Exposure time: 30s.

Immunofluorescence - SLC34A1 Polyclonal Antibody

Immunofluorescence analysis of HeLa cells using SLC34A1 antibody . Blue: DAPI for nuclear staining.