

NaDC3 antibody

Catalog Number: 113013

Product name

NaDC3 antibody

IP: 1:200-1:2000

IHC: 1:20-1:200

Immunogen

[Human SLC13A3 Recombinant protein \(GST tag\)](#)

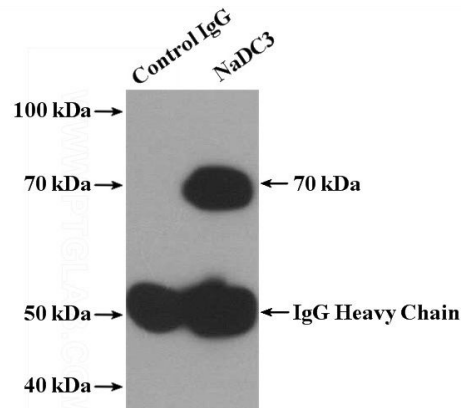
Validations

Specificity

Human, Mouse; other species not tested.

Antibody description

NaDC3 Rabbit Polyclonal antibody. Positive IP detected in mouse kidney tissue. Positive IHC detected in human kidney tissue. Observed molecular weight by Western-blot: 65-70 kDa



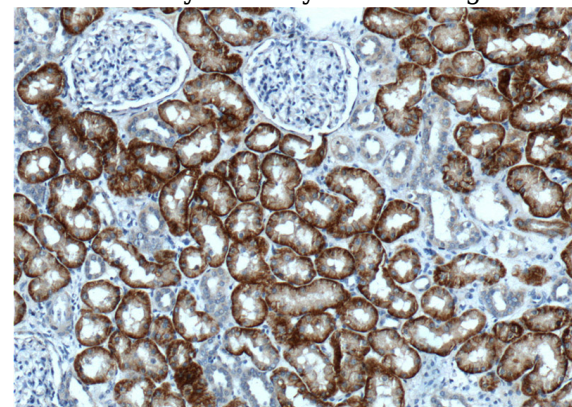
Preparation

This antibody was obtained by immunization of NaDC3 recombinant protein (Accession Number: NM_022829). Purification method: Antigen affinity purified.

IP Result of anti-SLC13A3 (IP:Catalog No:113013, 4ug; Detection:Catalog No:113013 1:500) with mouse kidney tissue lysate 4000ug.

Formulation

PBS with 0.1% sodium azide and 50% glycerol pH 7.3.



Storage

Store at -20°C. DO NOT ALIQUOT

Immunohistochemistry of paraffin-embedded human kidney tissue slide using Catalog No:113013(SLC13A3 Antibody) at dilution of 1:200 (under 10x lens).

Clonality

Polyclonal

Ig Type

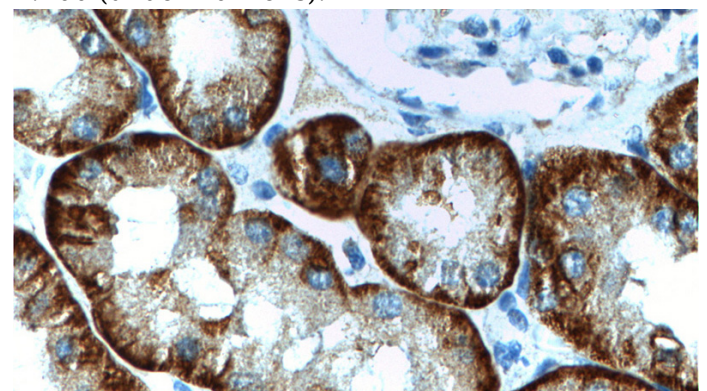
Rabbit IgG

Applications

ELISA, IP, IHC

Dilutions

Recommended Dilution:



Immunohistochemistry of paraffin-embedded

NaDC3 antibody



Catalog Number: 113013

human kidney tissue slide using Catalog

No:113013(SLC13A3 Antibody) at dilution of
1:200 (under 40x lens).