

# Human TEM7/PLXDC1 (His Tag) recombinant protein



Catalog Number: 503013

## General Information

### Gene Name Synonym

Tumor endothelial marker 3; Tumor endothelial marker 7

### Protein Construction

A DNA sequence encoding the human PLXDC1 (AAH36059.1) extracellular domain (Met 1-Thr 426) was expressed, with a polyhistidine tag at the C-terminus

### Organism

Human

### Expression Host

Human Cells

## QC Testing

### Purity

> 98 % as determined by SDS-PAGE

### Endotoxin

< 1.0 EU per  $\mu\text{g}$  of the protein as determined by the LAL method

### Stability

Samples are stable for up to twelve months from date of receipt at  $-70^{\circ}\text{C}$

### Predicted N terminal

Leu 19

### Molecular Mass

The recombinant human PLXDC1 consists of 419 amino acids and predicts a molecular mass of 47 kDa. In SDS-PAGE under reducing conditions, the apparent molecular mass of rh PLXDC1 is approximately 65-70 kDa due to glycosylation

### Formulation

Lyophilized from sterile PBS, pH 7.4

1. 5 % trehalose and mannitol are added as protectants before lyophilization.
2. Please contact us for any concerns or special requirements.

## Usage Guide

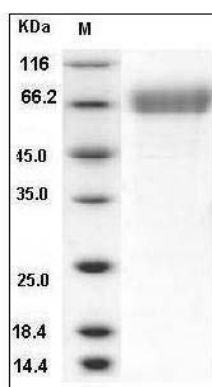
### Storage

Store it under sterile conditions at  $-20^{\circ}\text{C}$  to  $-80^{\circ}\text{C}$ . It is recommended that the protein be aliquoted for optimal storage. Avoid repeated freeze-thaw cycles.

### Reconstitution

Adding sterile water, prepare a stock solution of 0.25 mg/ml. Concentration is measured by UV-Vis.

### SDS-PAGE



Human TEM7 / PLXDC1 Protein (His Tag) SDS-PAGE