

# MRPS2 Polyclonal Antibody



Catalog Number: 162013

## Product name

MRPS2 Polyclonal Antibody

## Specificity

Mouse

## Antibody description

Polyclonal antibody to MRPS2

## Preparation

Antigen: Recombinant fusion protein containing a sequence corresponding to amino acids 1-296 of human MRPS2 (NP\_057118.1).

## Formulation

PBS with 0.02% sodium azide, 50% glycerol, pH7.3.

## Storage

Store at -20°C. Avoid freeze / thaw cycles.

## Clonality

Polyclonal

## Ig Type

Rabbit IgG

## Applications

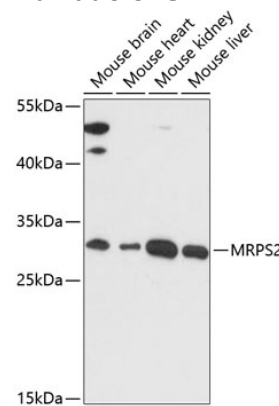
WB, IHC

## Dilutions

WB 1:500 - 1:2000

IHC 1:100 - 1:200

## Validations



Western blot - MRPS2 Polyclonal Antibody

Western blot analysis of extracts of various cell lines, using MRPS2 antibody at 1:3000 dilution. Secondary antibody: HRP Goat Anti-Rabbit IgG (H+L) at 1:10000 dilution. Lysates/proteins: 25ug per lane. Blocking buffer: 3% nonfat dry milk in TBST. Detection: ECL Basic Kit. Exposure time: 90s.