

Anti-Ccl3 antibody



Catalog Number: 176703

Product name

Anti-Ccl3 antibody

Specificity

Human, Mouse

Antibody description

Rabbit polyclonal antibody to Ccl3

Preparation

This antigen of this antibody was synthetic peptide within n-terminal mouse ccl3.

Formulation

Liquid, 1*PBS (pH7.4), 0.2% BSA, 40% Glycerol.
Preservative: 0.05% Sodium Azide.

Storage

Store at +4°C after thawing. Aliquot store at -20°C or -80°C. Avoid repeated freeze / thaw cycles.

Clonality

Polyclonal

Ig Type

Rabbit IgG

Applications

ICC, IHC-P, FC, ELISA

Dilutions

ICC: 1:50-1:200

IHC-P: 1:50-1:200

FC: 1:50-1:100

WB: 1:500

Validations

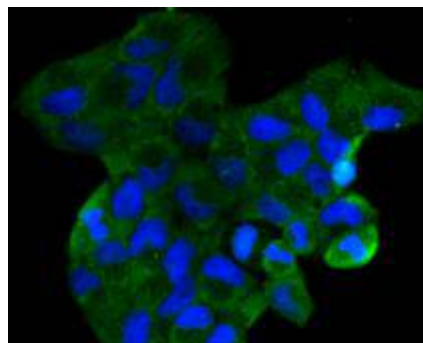


Fig1: Immunocytochemical staining of HeLa cells using anti-CCL3 rabbit polyclonal antibody.

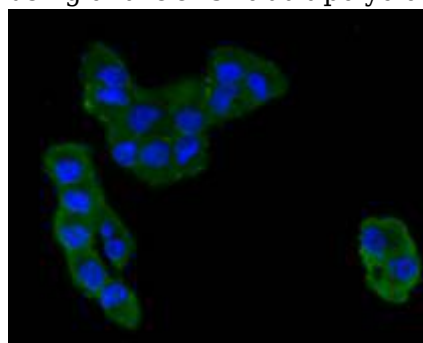


Fig2: Immunocytochemical staining of PANC-1 cells using anti-CCL3 rabbit polyclonal antibody.

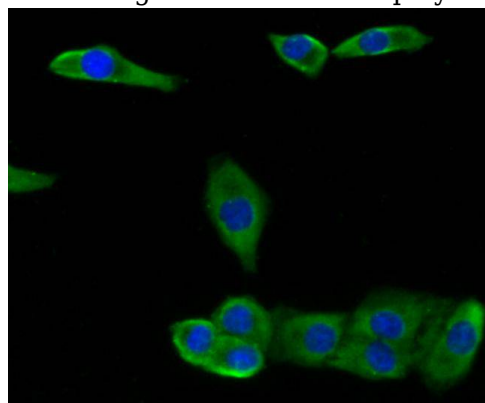


Fig3: Immunocytochemical staining of A549 cells using anti-CCL3 rabbit polyclonal antibody.

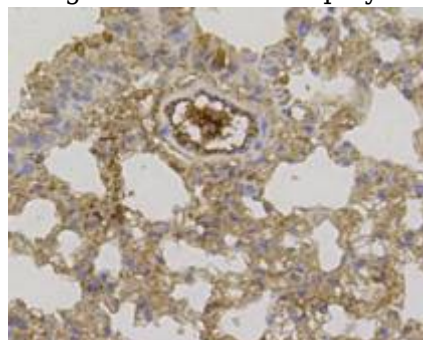


Fig4: Immunohistochemical analysis of paraffin-

embedded mouse lung tissue using anti-CCL3 rabbit polyclonal antibody.

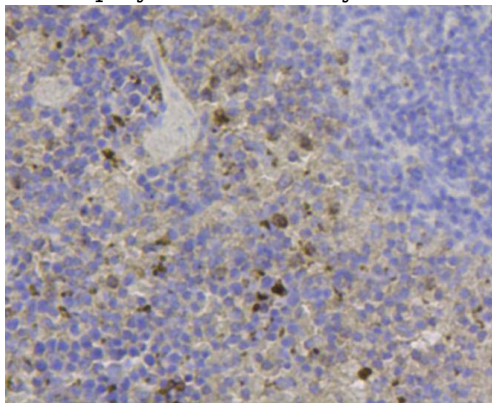


Fig5: Immunohistochemical analysis of paraffin-embedded mouse spleen tissue using anti-CCL3 rabbit polyclonal antibody.

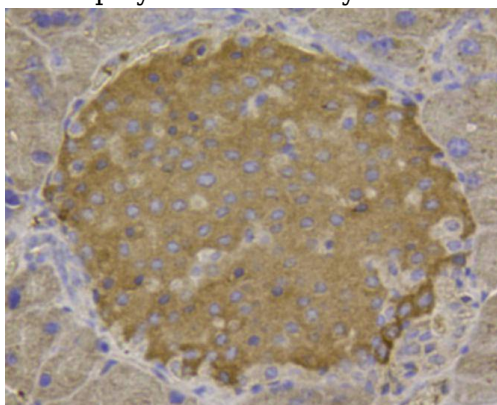


Fig6: Immunohistochemical analysis of paraffin-embedded mouse pancreas tissue using anti-CCL3 rabbit polyclonal antibody.

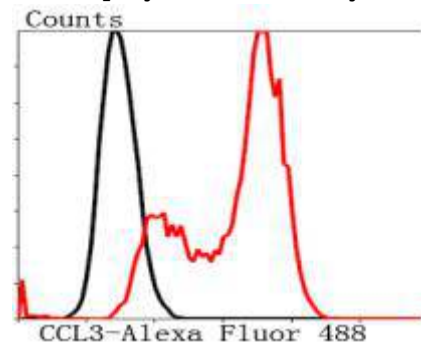


Fig7: Flow cytometric analysis of Hela cells with CCL3 antibody at 1/100 dilution (red) compared with an unlabelled control (cells without incubation with primary antibody; black). Alexa Fluor 488-conjugated Goat anti rabbit IgG was used as the secondary