

Anti-PA28A / PSME1 antibody



Catalog Number: 106703

Product name

Anti-PA28A / PSME1 antibody

Immunogen

[Human PA28A / PSME1 \(His Tag\) recombinant protein](#)

Specificity

Human PA28A / PSME1

Antibody description

Rabbit polyclonal to PA28A / PSME1

Preparation

Produced in rabbits immunized with purified, recombinant Human PA28A / PSME1 (rh PA28A / PSME1; Q06323; Met1-Tyr249). PA28A / PSME1 specific IgG was purified by Human PA28A / PSME1 affinity chromatography.

Formulation

0.2 µm filtered solution in PBS

Storage

This antibody can be stored at 2°C-8°C for one month without detectable loss of activity. Antibody products are stable for twelve months from date of receipt when stored at -20°C to -80°C.

Preservative-Free.

Sodium azide is recommended to avoid contamination (final concentration 0.05%-0.1%). It is toxic to cells and should be disposed of

properly. Avoid repeated freeze-thaw cycles.

Clonality

Polyclonal

Ig Type

Rabbit IgG

Applications

ELISA, WB

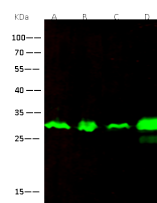
Dilutions

WB: 2-10 µg/ml

ELISA: 0.1-0.2 µg/mL

This antibody can be used at 0.1-0.2 µg/mL with the appropriate secondary reagents to detect Human PA28A / PSME1. The detection limit for Human PA28A / PSME1 is < 0.039 ng/well.

Validations



Lanes	A	B	C	D
Items				
Sample (whole cell lysate)	Jurkat	Hela	293T	HL-60
Sample Volume (µg/lane)	30	30	30	30
Gel	13% SDS-PAGE reducing gel			
Recommended Concentration	2-10 µg/ml			
Secondary Antibody	Dylight 800-labeled Antibody To Rabbit IgG (H+L), at 1:5000 dilution.			
Developed using Odyssey imaging system.				
Explanation	Predicted band size : 27 kDa Observed band size : 28 kDa			

PA28A / PSME1 Antibody, Rabbit PAb, Antigen Affinity Purified, Western blot