

Anti-Phospho-Cytokeratin 18 (Ser33) Rabbit antibody



Catalog Number: 166703

Product name

Anti-Phospho-Cytokeratin 18 (Ser33) Rabbit antibody

Specificity

Human

Antibody description

Phospho-Cytokeratin 18 (Ser33) Rabbit polyclonal antibody

Preparation

Antigen: Peptide sequence around phosphorylation site of serine 33 (A-A-S(p)-V-Y) derived from Human Keratin 18 (CK18).

Formulation

Supplied at 1.0mg/mL in phosphate buffered saline (without Mg²⁺ and Ca²⁺), pH 7.4, 150mM NaCl, 0.02% sodium azide and 50% glycerol.

Storage

Store at 4°C short term. Store at -20°C long term. Avoid freeze / thaw cycle.

Clonality

Polyclonal

Ig Type

Rabbit IgG

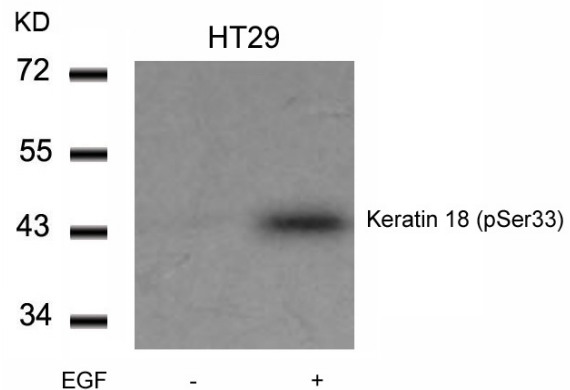
Applications

WB, IHC-P

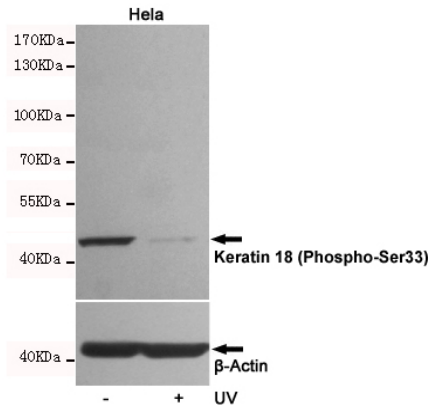
Dilutions

WB:1/500-1/1000 IHC:1/50-1/100

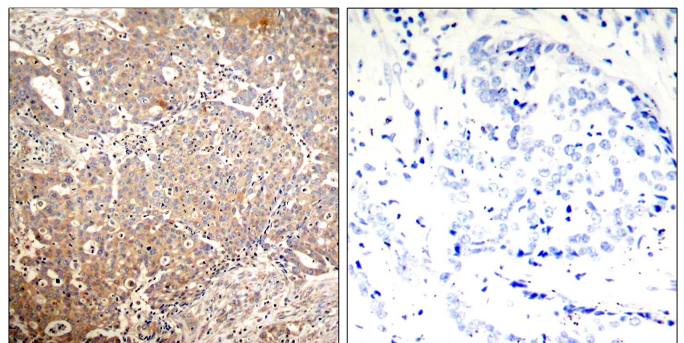
Validations



Western blot analysis of extracts from HT29 cells untreated or treated with EGF using Keratin 18 (Phospho-Ser33) Antibody .



Western blot analysis of extracts from HeLa cells, untreated or UV-treated, using KRT18(Phospho-Ser33) Rabbit pAb (1:5000 diluted). Predicted band size:46kDa. Observed band size:46kDa..



Immunohistochemical analysis of paraffin-embedded human breast carcinoma tissue using Keratin 18 (Phospho-Ser33) Antibody (left) or the same antibody preincubated with blocking peptide (right).