

Human MKK6/MEK6/MAP2K6 (207 Ser/Asp, 211 Thr/Asp, His & GST Tag) recombinant protein



Catalog Number: 503703

General Information

Gene Name Synonym

MAP kinase kinase 6; MAPKK 6; EC 2.7.12.2; MAPK/ERK kinase 6; MEK 6; Stress-activated protein kinase kinase 3; SAPK kinase 3; SAPKK-3; SAPKK3

Protein Construction

A DNA sequence encoding the human MAP2K6 isoform 1 (P52564-1) (Met 1-Asp 334, Ser 207/Asp, Thr 211/Asp) was fused with the N-terminal polyhistidine-tagged GST tag at the N-terminus.

Organism

Human

Expression Host

Baculovirus-Insect Cells

QC Testing

Activity

The specific activity was determined to be 1250 nmol/min/mg using inactive MAPK14 as substrate.

Purity

> 88 % as determined by SDS-PAGE

Endotoxin

< 1.0 EU per μg of the protein as determined by the LAL method

Stability

Samples are stable for up to twelve months from date of receipt at -70°C

Predicted N terminal

Met

Molecular Mass

The recombinant human MAP2K6(S207D&T211D)/GST chimera consists of 571 amino acids and has a calculated molecular mass of 65.3 KDa. It migrates as an approximately 60 KDa band in SDS-PAGE under reducing conditions.

Formulation

Supplied as sterile 20mM Tris, 500mM NaCl, pH 8.0, 10% glycerol

- 5 % trehalose and mannitol are added as protectants before lyophilization.
- Please contact us for any concerns or special requirements.

Usage Guide

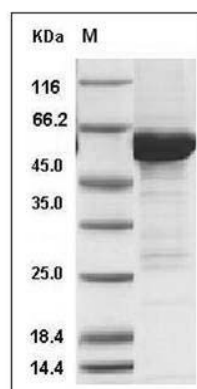
Storage

Store it under sterile conditions at -20°C to -80°C . It is recommended that the protein be aliquoted for optimal storage. Avoid repeated freeze-thaw cycles.

Reconstitution

Adding sterile water, prepare a stock solution of 0.25 mg/ml. Concentration is measured by UV-Vis.

SDS-PAGE

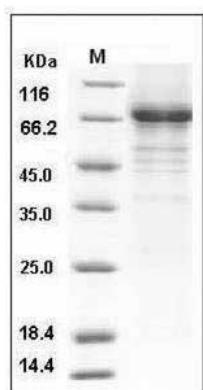


Human MKK6 / MEK6 / MAP2K6 Protein (207 Ser/Asp, 211 Thr/Asp, His & GST Tag) SDS-PAGE

Human MKK6/MEK6/MAP2K6 (207 Ser/Asp, 211 Thr/Asp, His & GST Tag) recombinant protein



Catalog Number: 503703



Human Vitronectin / VTN Protein (His Tag) SDS-PAGE