

Anti-SEN7 antibody



Catalog Number: 176303

Product name

Anti-SEN7 antibody

Ig Type

Rabbit IgG

Specificity

Human, Mouse

Applications

WB, IHC-P

Antibody description

Rabbit polyclonal antibody to SEN7

Dilutions

WB: 1:500-1:2000

Preparation

This antigen of this antibody was the antiserum was produced against synthesized peptide derived from human senp7. aa range:991-1040

IHC-P: 1:100-1:300

Formulation

Liquid, Liquid in PBS containing 50% glycerol, 0.5% BSA and 0.02% sodium azide.

Storage

Store at +4°C after thawing. Aliquot store at -20°C or -80°C. Avoid repeated freeze / thaw cycles.

Clonality

Polyclonal

Validations

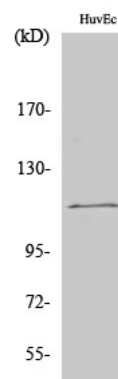


Fig1:: Western Blot analysis of various cells using SEN7 Polyclonal Antibody cells nucleus extracted by Minute TM Cytoplasmic and Nuclear Fractionation kit (SC-003, Inventbiotech, MN, USA).