

PSG11 antibody



Catalog Number: 114303

Product name

PSG11 antibody

WB: 1:500-1:5000

IHC: 1:20-1:200

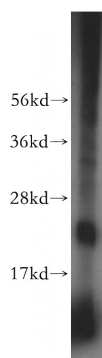
Specificity

Human, Mouse; other species not tested.

Validations

Antibody description

PSG11 Rabbit Polyclonal antibody. Positive WB detected in mouse uterus tissue, HeLa cells. Positive IHC detected in human brain tissue, human kidney tissue, human liver tissue, human lung tissue, human placenta tissue, human testis tissue. Observed molecular weight by Western-blot: 24 kDa



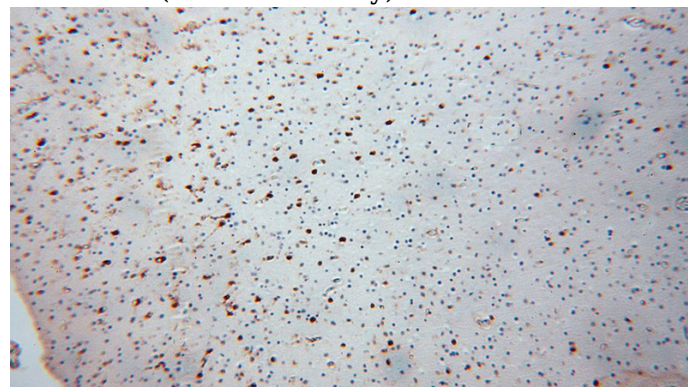
Preparation

This antibody was obtained by immunization of PSG11 recombinant protein (Accession Number: BC020711). Purification method: Antigen affinity purified.

mouse uterus tissue were subjected to SDS PAGE followed by western blot with Catalog No:114303(PSG11 antibody) at dilution of 1:600

Formulation

PBS with 0.02% sodium azide and 50% glycerol pH 7.3.



Storage

Store at -20°C. DO NOT ALIQUOT

Immunohistochemical of paraffin-embedded human brain using Catalog No:114303(PSG11 antibody) at dilution of 1:100 (under 10x lens)

Clonality

Polyclonal

Ig Type

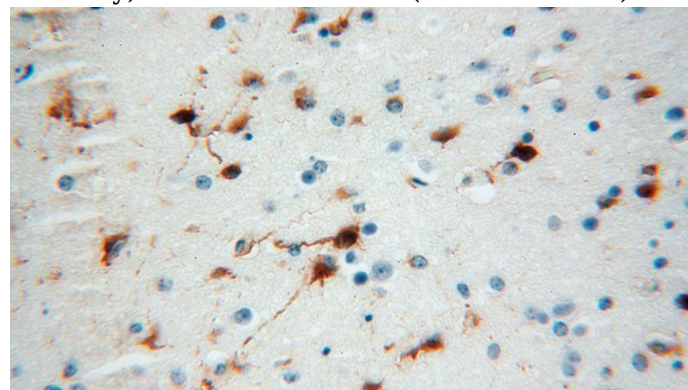
Rabbit IgG

Applications

ELISA, WB, IHC

Dilutions

Recommended Dilution:



Immunohistochemical of paraffin-embedded human brain using Catalog No:114303(PSG11

PSG11 antibody



Catalog Number: 114303

antibody) at dilution of 1:100 (under 40x lens)