

Anti-14-3-3 beta/YWHAB antibody



Catalog Number: 104303

Product name

Anti-14-3-3 beta/YWHAB antibody

Immunogen

[Cynomolgus 14-3-3 beta/YWHAB recombinant protein](#)

Specificity

Cynomolgus 14-3-3 beta / YWHAB

Has cross-reactivity in ELISA with Human YWHAB. No cross activity in ELISA with E.coli cell lysate

Antibody description

Mouse monoclonal to 14-3-3 beta/YWHAB

Preparation

This antibody was produced from a hybridoma resulting from the fusion of a mouse myeloma with B cells obtained from a mouse immunized with purified, recombinant Cynomolgus 14-3-3 beta / YWHAB (Q4R572-2; Met 2-Asn 244). The IgG fraction of the cell culture supernatant was purified by Protein A affinity chromatography.

Formulation

0.2 µm filtered solution in PBS with 5% trehalose

Storage

This antibody can be stored at 2°C-8°C for one month without detectable loss of activity. Antibody products are stable for twelve months from date of receipt when stored at -20°C to -80°C.

Preservative-Free.

Sodium azide is recommended to avoid contamination (final concentration 0.05%-0.1%). It is toxic to cells and should be disposed of properly. Avoid repeated freeze-thaw cycles.

Clonality

Monoclonal

Ig Type

Mouse IgG2b

Applications

ELISA, WB, IP

Dilutions

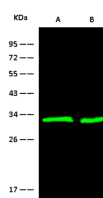
WB: 2-5 µg/mL

ELISA: 0.5-1 µg/mL

This antibody can be used at 0.5-1 µg/mL with the appropriate secondary reagents to detect Cynomolgus YWHAB. The detection limit for Cynomolgus YWHAB is approximately 0.31 ng/well.

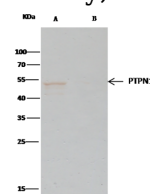
IP: 4-6 µg/mg of lysate

Validations



Items	Lanes	A	B
Sample (whole cell lysate)		HeLa	HepG2
Sample quantity		30	30
Cell	13% SDS-PAGE reducing gel		
Recommended Concentration	2.5 µg/ml		
Secondary Antibody	Dylight 800 labeled Antibody To Mouse IgG (H+L), at 1/500 dilution.		

14-3-3 beta / YWHAB Antibody, Mouse MAb,



Items	Lanes	A	B
Sample (whole cell lysate)		A549	
Sample quantity		0.5 mg	
IP antibody type		PIPNI-R226	Rabbit blank IgG
IP antibody quantity		2 µg	
Protein G agarose	15 µl of 50% Protein G Agarose		
Gel	13% SDS-PAGE reducing gel		
Primary antibody	PIPNI antibody at 3µg/ml [Cat# 10304-R226]		
Secondary antibody	Clean-Blot® IP Detection Reagent (HRP) at 1:1000 dilution.		

Western blot

14-3-3 beta / YWHAB Antibody, Mouse MAb,

Anti-14-3-3 beta/YWHAB antibody



Catalog Number: 104303

Immunoprecipitation