

# LPHN3 antibody

Catalog Number: 112303

## Product name

LPHN3 antibody

## Specificity

Human, Mouse, Rat; other species not tested.

## Antibody description

LPHN3 Rabbit Polyclonal antibody. Positive FC detected in HepG2 cells. Positive WB detected in mouse brain tissue, COLO 320 cells, HepG2 cells, human liver tissue, mouse colon tissue. Positive IP detected in mouse brain tissue. Observed molecular weight by Western-blot: 139 kDa

## Preparation

This antibody was obtained by immunization of Peptide (Accession Number: NM\_015236). Purification method: Antigen affinity purified.

## Formulation

PBS with 0.02% sodium azide and 50% glycerol pH 7.3.

## Storage

Store at -20°C. DO NOT ALIQUOT

## Clonality

Polyclonal

## Ig Type

Rabbit IgG

## Applications

ELISA, WB, IP, FC

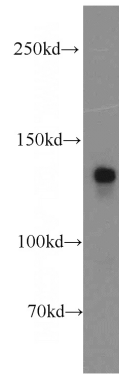
## Dilutions

Recommended Dilution:

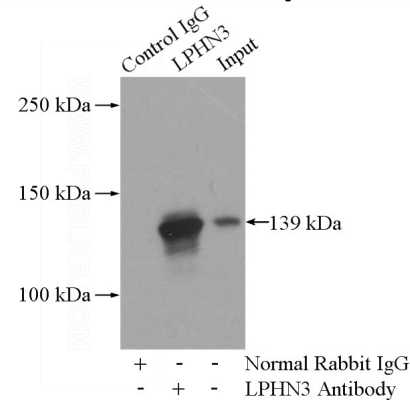
WB: 1:500-1:5000

IP: 1:200-1:1000

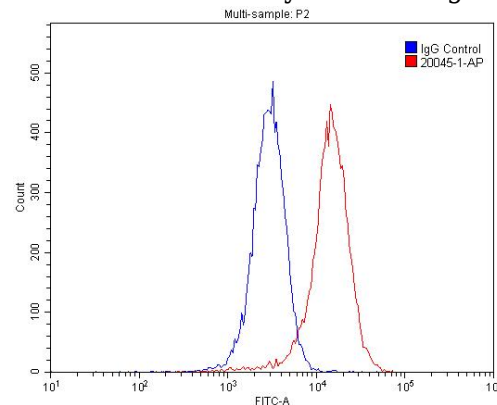
## Validations



mouse brain tissue were subjected to SDS PAGE followed by western blot with Catalog No:112303(LPHN3 antibody) at dilution of 1:300



IP Result of anti-LPHN3 (IP:Catalog No:112303, 4ug; Detection:Catalog No:112303 1:300) with mouse brain tissue lysate 4000ug.



1X10<sup>6</sup> HepG2 cells were stained with .2ug LPHN3 antibody (Catalog No:112303, red) and control antibody (blue). Fixed with 4% PFA

# LPHN3 antibody



Catalog Number: 112303

---

blocked with 3% BSA (30 min). Alexa Fluor 488-

conjugated AffiniPure Goat Anti-Rabbit IgG(H+L)  
with dilution 1:1500.