

BRMS1 Polyclonal Antibody



Catalog Number: 162303

Product name

BRMS1 Polyclonal Antibody

Specificity

Human, Mouse, Rat

Antibody description

Polyclonal antibody to BRMS1

Preparation

Antigen: Recombinant fusion protein containing a sequence corresponding to amino acids 90-210 of human BRMS1 (NP_056214.1).

Formulation

PBS with 0.02% sodium azide, 50% glycerol, pH7.3.

Storage

Store at -20°C. Avoid freeze / thaw cycles.

Clonality

Polyclonal

Ig Type

Rabbit IgG

Applications

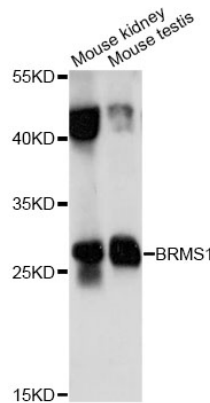
WB, IHC

Dilutions

WB 1:500 - 1:2000

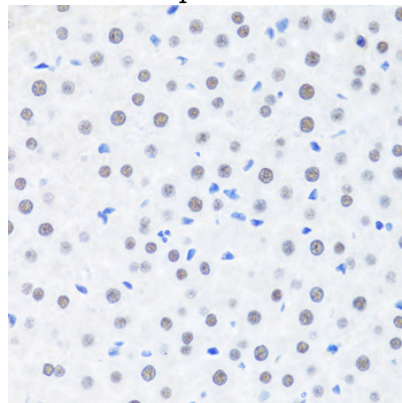
IHC 1:50 - 1:100

Validations



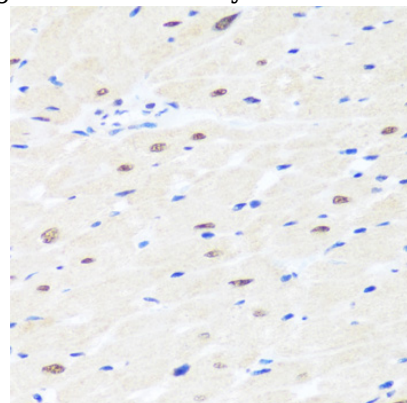
Western blot - BRMS1 Polyclonal Antibody

Western blot analysis of extracts of various cell lines, using BRMS1 antibody at 1:1000 dilution. Secondary antibody: HRP Goat Anti-Rabbit IgG (H+L) at 1:10000 dilution. Lysates/proteins: 25ug per lane. Blocking buffer: 3% nonfat dry milk in TBST. Detection: ECL Basic Kit. Exposure time: 10s.



Immunohistochemistry - BRMS1 Polyclonal Antibody

Immunohistochemistry of paraffin-embedded rat liver using BRMS1 antibody at dilution of 1:100



(40x lens).

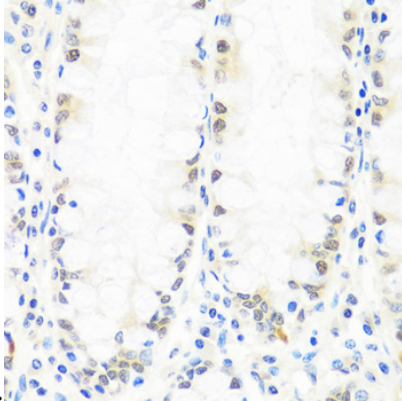
BRMS1 Polyclonal Antibody



Catalog Number: 162303

Immunohistochemistry - BRMS1 Polyclonal Antibody

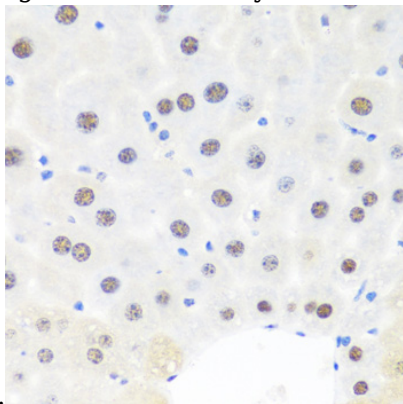
Immunohistochemistry of paraffin-embedded rat heart using BRMS1 antibody at dilution of 1:100



(40x lens).

Immunohistochemistry - BRMS1 Polyclonal Antibody

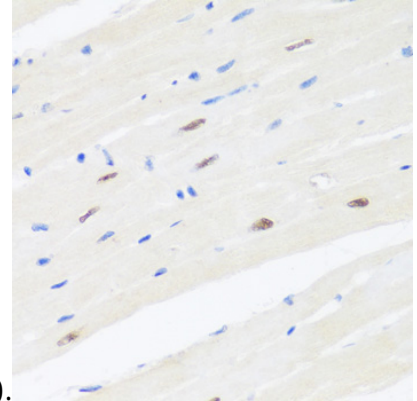
Immunohistochemistry of paraffin-embedded human colon using BRMS1 antibody at dilution of



1:100 (40x lens).

Immunohistochemistry - BRMS1 Polyclonal Antibody

Immunohistochemistry of paraffin-embedded mouse liver using BRMS1 antibody at dilution of



1:100 (40x lens).

Immunohistochemistry - BRMS1 Polyclonal Antibody

Immunohistochemistry of paraffin-embedded mouse heart using BRMS1 antibody at dilution of 1:100 (40x lens).