

C16orf13 antibody



Catalog Number: 108603

Product name

C16orf13 antibody

Immunogen

[Human C16orf13 Recombinant protein \(His tag\)](#)

Specificity

Human, Mouse, Rat; other species not tested.

Antibody description

C16orf13 Rabbit Polyclonal antibody. Positive WB detected in mouse liver tissue, HeLa cells, rat liver tissue. Positive IF detected in HeLa cells. Observed molecular weight by Western-blot: 23 kDa

Preparation

This antibody was obtained by immunization of C16orf13 recombinant protein (Accession Number: NM_001040161). Purification method: Antigen affinity purified.

Formulation

PBS with 0.1% sodium azide and 50% glycerol pH 7.3.

Storage

Store at -20°C. DO NOT ALIQUOT

Clonality

Polyclonal

Ig Type

Rabbit IgG

Applications

ELISA, WB, IF

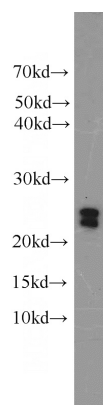
Dilutions

Recommended Dilution:

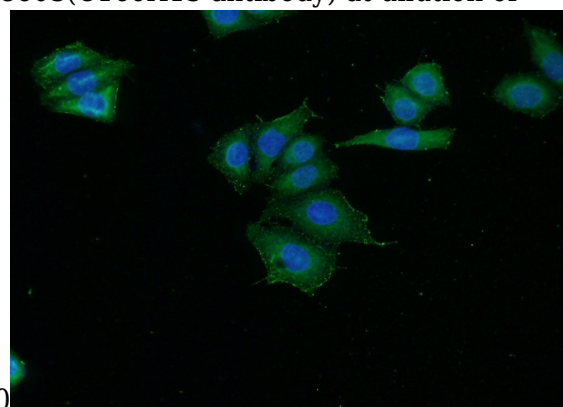
WB: 1:500-1:5000

IF: 1:20-1:200

Validations



mouse liver tissue were subjected to SDS PAGE followed by western blot with Catalog No:108603(C16orf13 antibody) at dilution of



Immunofluorescent analysis of HeLa cells using Catalog No:108603(C16orf13 Antibody) at dilution of 1:50 and Alexa Fluor 488-conjugated AffiniPure Goat Anti-Rabbit IgG(H+L)