

USP28 antibody

Catalog Number: 116603

Product name

USP28 antibody

IP: 1:200-1:2000

IHC: 1:20-1:200

Specificity

Human, Mouse, Rat; other species not tested.

Antibody description

USP28 Rabbit Polyclonal antibody. Positive WB detected in HeLa cells. Positive IP detected in HeLa cells. Positive IHC detected in human breast cancer tissue. Observed molecular weight by Western-blot: 135 kDa

Preparation

This antibody was obtained by immunization of USP28 recombinant protein (Accession Number: NM_001346273). Purification method: Antigen affinity purified.

Formulation

PBS with 0.02% sodium azide and 50% glycerol pH 7.3.

Storage

Store at -20°C. DO NOT ALIQUOT

Clonality

Polyclonal

Ig Type

Rabbit IgG

Applications

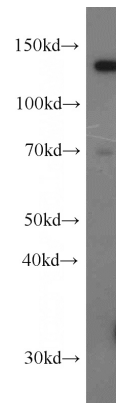
ELISA, WB, IHC, IP

Dilutions

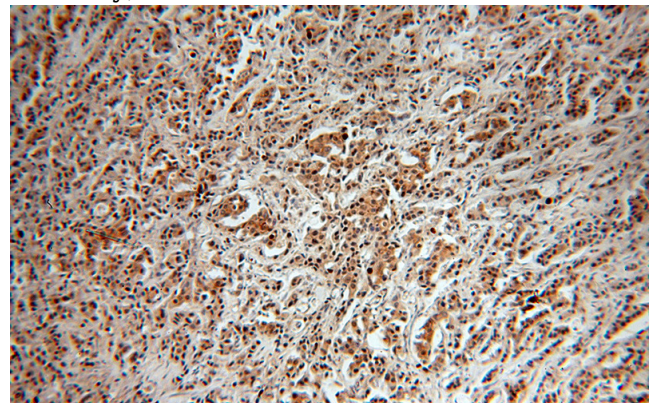
Recommended Dilution:

WB: 1:500-1:5000

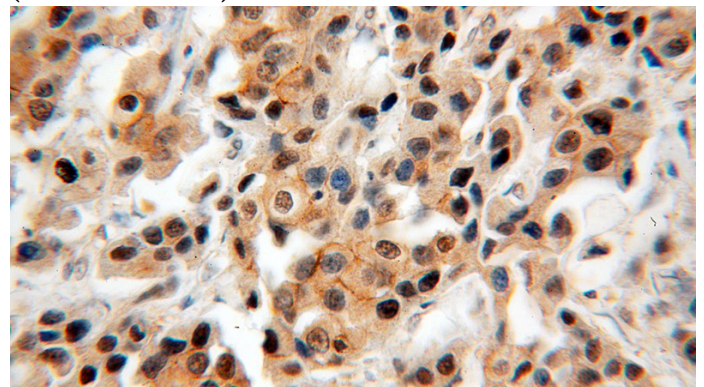
Validations



HeLa cells were subjected to SDS PAGE followed by western blot with Catalog No:116603(USP28 antibody) at dilution of 1:1000



Immunohistochemical of paraffin-embedded human breast cancer using Catalog No:116603(USP28 antibody) at dilution of 1:50 (under 10x lens)



Immunohistochemical of paraffin-embedded

USP28 antibody

Catalog Number: 116603

human breast cancer using Catalog No:116603(USP28 antibody) at dilution of 1:50 (under 40x lens)

IP Result of anti-USP28 (IP:Catalog No:116603, 4ug; Detection:Catalog No:116603 1:600) with HeLa cells lysate 2800ug.

