

Anti-FAM13C antibody



Catalog Number: 176603

Product name

Anti-FAM13C antibody

Specificity

Human, Rat

Antibody description

Rabbit polyclonal antibody to FAM13C

Preparation

This antigen of this antibody was synthetic peptide within human fam13c1 aa 241-270.

Formulation

Liquid, 1*TBS (pH7.4), 0.2% BSA, 50% Glycerol. Preservative: 0.05% Sodium Azide.

Storage

Store at +4°C after thawing. Aliquot store at -20°C. Avoid repeated freeze / thaw cycles.

Clonality

Polyclonal

Ig Type

Rabbit IgG

Applications

WB, IHC-P

Dilutions

WB: 1:500-1:1,000

IHC-P: 1:50-1:200

Validations

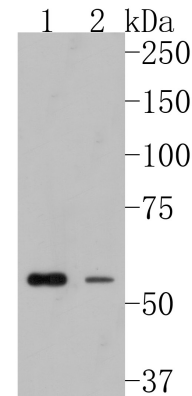


Fig1:: Western blot analysis of FAM13C1 on different lysates. Proteins were transferred to a PVDF membrane and blocked with 5% BSA in PBS for 1 hour at room temperature. The primary antibody (1/1,000) was used in 5% BSA at room temperature for 2 hours. Goat Anti-Rabbit IgG - HRP Secondary Antibody (HA1001) at 1:200,000 dilution was used for 1 hour at room temperature.; Positive control; Lane 1: HepG2 cell lysate; Lane 2: Rat brain tissue lysate

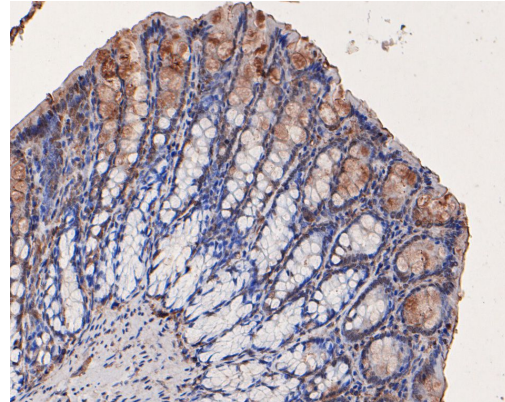


Fig2:: Immunohistochemical analysis of paraffin-embedded rat large intestine tissue using anti-FAM13C1 antibody. The section was pre-treated using heat mediated antigen retrieval with Tris-EDTA buffer (pH 8.0-8.4) for 20 minutes. The tissues were blocked in 5% BSA for 30 minutes at room temperature, washed with ddH₂O and PBS, and then probed with the primary antibody (1/100) for 30 minutes at room temperature. The detection was performed using an HRP conjugated compact polymer system. DAB was used as the chromogen. Tissues were counterstained with hematoxylin and mounted with DPX.