

SRY antibody



Catalog Number: 115603

Product name

SRY antibody

Specificity

Human, Mouse; other species not tested.

Antibody description

SRY Rabbit Polyclonal antibody. Positive WB detected in human testis tissue. Positive IHC detected in human kidney tissue, human spleen tissue, human testis tissue. Observed molecular weight by Western-blot: 30kd

Preparation

This antibody was obtained by immunization of SRY recombinant protein (Accession Number: NM_003140). Purification method: Antigen affinity purified.

Formulation

PBS with 0.02% sodium azide and 50% glycerol pH 7.3.

Storage

Store at -20°C. DO NOT ALIQUOT

Clonality

Polyclonal

Ig Type

Rabbit IgG

Applications

ELISA, WB, IHC

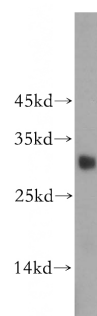
Dilutions

Recommended Dilution:

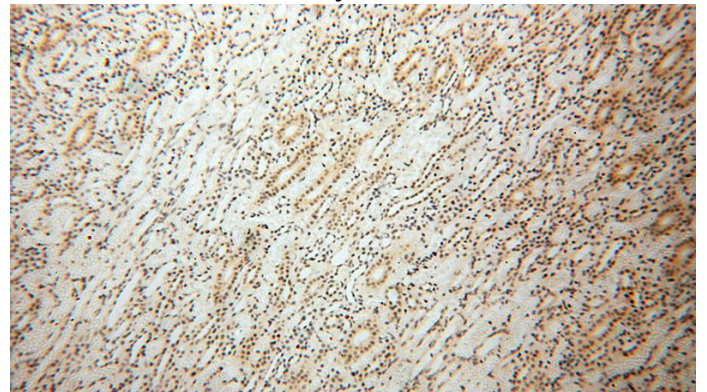
WB: 1:200-1:2000

IHC: 1:20-1:200

Validations



human testis tissue were subjected to SDS PAGE followed by western blot with Catalog No:115603(SRY antibody) at dilution of 1:500



Immunohistochemical of paraffin-embedded human kidney using Catalog No:115603(SRY antibody) at dilution of 1:100 (under 10x lens)