

# PAWR antibody

Catalog Number: 113603

## Product name

PAWR antibody

## Specificity

Human, Mouse, Rat; other species not tested.

## Antibody description

PAWR Rabbit Polyclonal antibody. Positive WB detected in mouse heart tissue, mouse kidney tissue. Positive IHC detected in human breast cancer tissue, human kidney tissue. Observed molecular weight by Western-blot: 45kd

## Preparation

This antibody was obtained by immunization of Peptide (Accession Number: NM\_002583). Purification method: Antigen affinity purified.

## Formulation

PBS with 0.02% sodium azide and 50% glycerol pH 7.3.

## Storage

Store at -20°C. DO NOT ALIQUOT

## Clonality

Polyclonal

## Ig Type

Rabbit IgG

## Applications

ELISA, WB, IHC

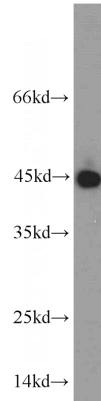
## Dilutions

Recommended Dilution:

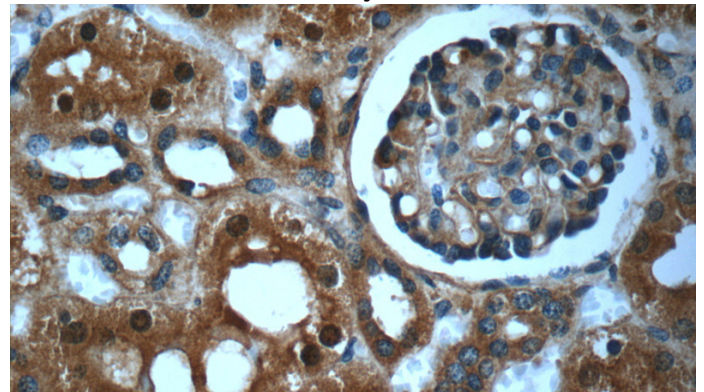
WB: 1:200-1:2000

IHC: 1:20-1:200

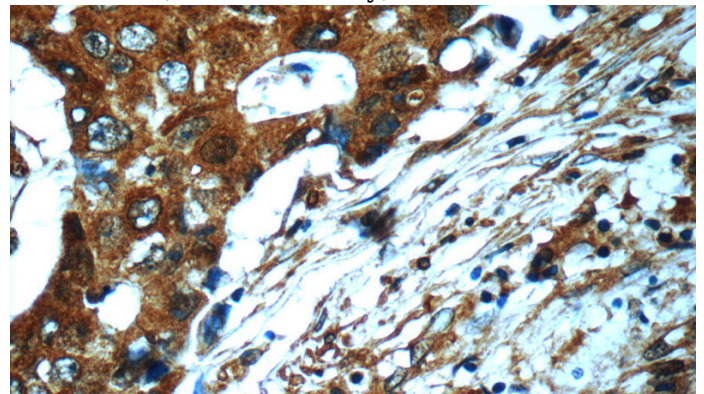
## Validations



mouse heart tissue were subjected to SDS PAGE followed by western blot with Catalog No:113603(PAWR antibody) at dilution of 1:400



Immunohistochemistry of paraffin-embedded human kidney slide using Catalog No:113603(PAWR Antibody) at dilution of 1:50



Immunohistochemistry of paraffin-embedded human breast cancer slide using Catalog No:113603(PAWR Antibody) at dilution of 1:50