

SERPINB2 antibody



Catalog Number: 115203

Product name

SERPINB2 antibody

IP: 1:200-1:1000

IHC: 1:20-1:200

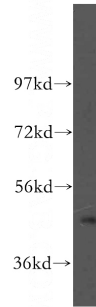
Specificity

Human; other species not tested.

Validations

Antibody description

SERPINB2 Rabbit Polyclonal antibody. Positive IHC detected in human endometrial cancer tissue. Positive IP detected in Jurkat cells. Positive WB detected in Jurkat cells, human liver tissue. Observed molecular weight by Western-blot: 45-47 kDa



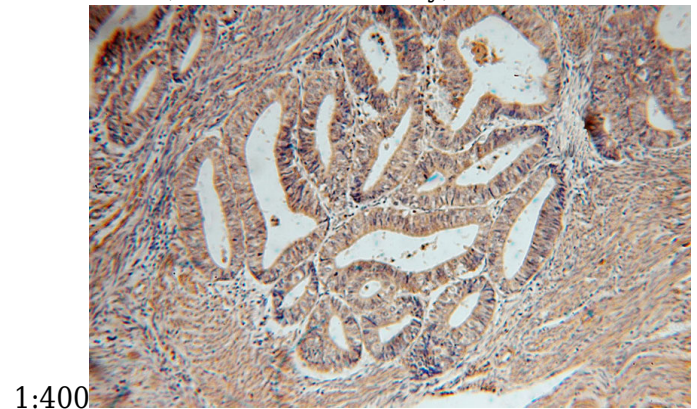
Preparation

This antibody was obtained by immunization of SERPINB2 recombinant protein (Accession Number: XM_024451192). Purification method: Antigen affinity purified.

Jurkat cells were subjected to SDS PAGE followed by western blot with Catalog No:115203(SERPINB2 antibody) at dilution of

Formulation

PBS with 0.02% sodium azide and 50% glycerol pH 7.3.



Storage

Store at -20°C. DO NOT ALIQUOT

Clonality

Polyclonal

Immunohistochemical of paraffin-embedded human endometrial cancer using Catalog No:115203(SERPINB2 antibody) at dilution of 1:50 (under 10x lens)

Ig Type

Rabbit IgG

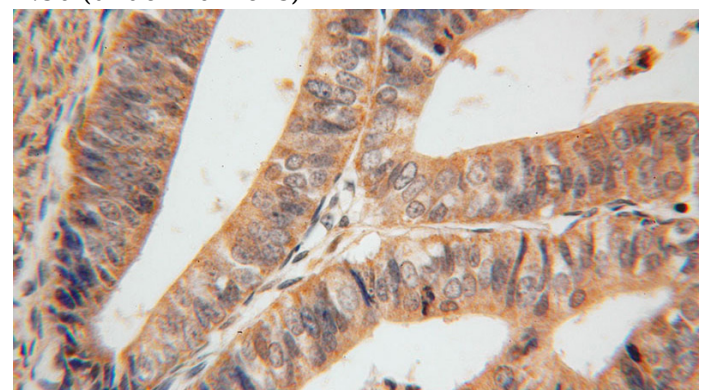
Applications

ELISA, WB, IHC, IP

Dilutions

Recommended Dilution:

WB: 1:200-1:2000



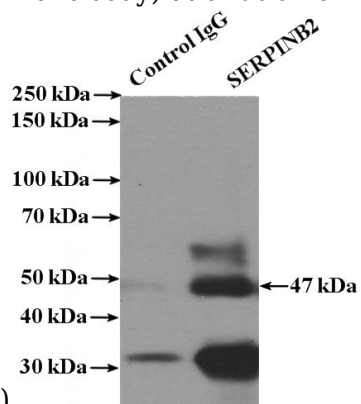
Immunohistochemical of paraffin-embedded

SERPINB2 antibody

Catalog Number: 115203

human endometrial cancer using Catalog No:115203(SERPINB2 antibody) at dilution of

IP Result of anti-SERPINB2 (IP:Catalog No:115203, 4ug; Detection:Catalog No:115203 1:300) with Jurkat cells lysate 3600ug.



1:50 (under 40x lens)