

Mouse REG3A (His Tag) recombinant protein



Catalog Number: 501203

General Information

Gene Name Synonym

Islet of Langerhans regenerating protein 3; Lithostathine 3; Pancreatitis-associated protein 2; Regenerating islet-derived protein III-alpha; Regenerating islet-derived protein 3-alpha 16.5 kDa form; Regenerating islet-derived protein 3-alpha 15 kDa form

Protein Construction

A DNA sequence encoding the extracellular domain (Met1-Gln175) of mouse REG3A (NP_035389.1) precursor was expressed with a C-terminal polyhistidine tag.

Organism

Mouse

Expression Host

Human Cells

QC Testing

Purity

> 95 % as determined by SDS-PAGE

Endotoxin

< 1.0 EU per μg of the protein as determined by the LAL method

Stability

Samples are stable for up to twelve months from date of receipt at -70°C

Predicted N terminal

Glu 27

Molecular Mass

The secreted recombinant mouse REG3A consists of 161 amino acids and has a calculated molecular mass of 18 kDa as estimated in SDS-PAGE under reducing conditions.

Formulation

Lyophilized from sterile PBS, pH 7.4

1. 5 % trehalose and mannitol are added as protectants before lyophilization.

2. Please contact us for any concerns or special requirements.

Usage Guide

Storage

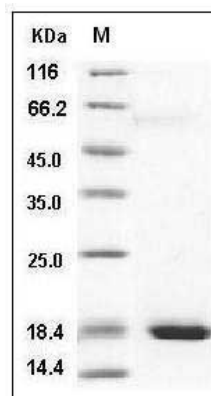
Store it under sterile conditions at -20°C to -80°C .

It is recommended that the protein be aliquoted for optimal storage. Avoid repeated freeze-thaw cycles.

Reconstitution

Adding sterile water, prepare a stock solution of 0.25 mg/ml. Concentration is measured by UV-Vis.

SDS-PAGE



Mouse REG3A Protein (His Tag) SDS-PAGE