

Anti-DDB1 Rabbit antibody



Catalog Number: 167903

Product name

Anti-DDB1 Rabbit antibody

Specificity

Human, Mouse, Rat

Antibody description

DDB1 Rabbit monoclonal antibody

Preparation

Antigen: A synthetic peptide of human DDB1

Formulation

50nM Tris-Glycine(pH 7.4), 0.15M NaCl,
40%Glycerol, 0.01% sodium azide and 0.05% BSA

Storage

Store at 4°C short term. Store at -20°C long term.
Avoid freeze / thaw cycle.

Clonality

Monoclonal

Ig Type

Rabbit IgG

Applications

WB, IHC-P, ICC/IF, IP

Dilutions

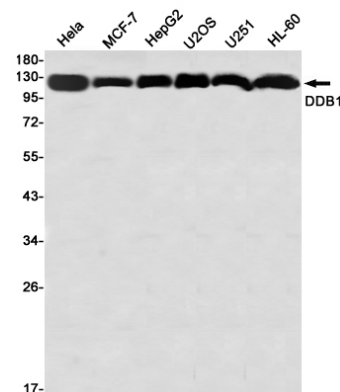
WB: 1/2000-1/10000

IHC: 1/50

ICC/IF: 1/20

IP: 1/20

Validations



Western blot detection of DDB1 in HeLa, MCF-7, HepG2, U2OS, U251, HL-60 using DDB1 Rabbit mAb(1:1000 diluted)