

Anti-IL-1 alpha / IL-1F1 / IL1A antibody



Catalog Number: 103903

Product name

Anti-IL-1 alpha / IL-1F1 / IL1A antibody

Immunogen

[Mouse IL-1 alpha / IL-1F1 / IL1A recombinant protein](#)

Specificity

Mouse IL-1 alpha / IL-1F1 / IL1A

Antibody description

Rabbit polyclonal to IL-1 alpha / IL-1F1 / IL1A

Preparation

Produced in rabbits immunized with purified, recombinant Mouse IL-1 alpha / IL-1F1 / IL1A (rM IL-1 alpha / IL-1F1 / IL1A; NP_034684.2; Ser 115-Ser 270). IL-1 alpha / IL-1F1 / IL1A specific IgG was purified by Mouse IL-1 alpha / IL-1F1 / IL1A affinity chromatography.

Formulation

0.2 µm filtered solution in PBS with 5% trehalose

Storage

This antibody can be stored at 2°C-8°C for one month without detectable loss of activity. Antibody products are stable for twelve months from date of receipt when stored at -20°C to -80°C.

Preservative-Free.

Sodium azide is recommended to avoid contamination (final concentration 0.05%-0.1%). It is toxic to cells and should be disposed of properly. Avoid repeated freeze-thaw cycles.

Clonality

Polyclonal

Ig Type

Rabbit IgG

Applications

ELISA, IHC-P

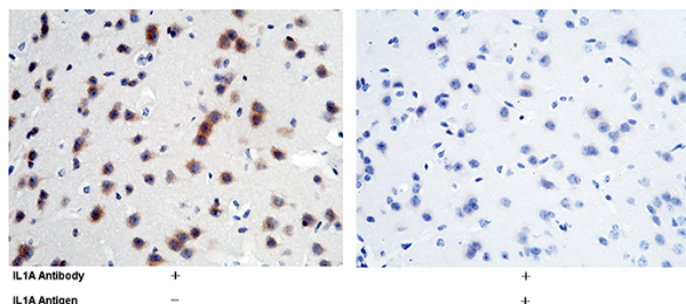
Dilutions

ELISA: 0.1-0.2 µg/mL

This antibody can be used at 0.1-0.2 µg/mL with the appropriate secondary reagents to detect Mouse IL-1 alpha / IL-1F1 / IL1A. The detection limit for Mouse IL-1 alpha / IL-1F1 / IL1A is approximately 0.00245 ng/well.

IHC-P: 0.5-3 µg/mL

Validations



IL-1 alpha / IL-1F1 / IL1A Antibody, Rabbit PAb, Antigen Affinity Purified, Immunohistochemistry

Immunochemical staining of mouse IL1A in mouse-brain with rabbit polyclonal antibody (2 µg/mL, formalin-fixed paraffin embedded sections). The left panel: tissue incubated with primary antibody; The right panel: tissue incubated with the mixture of primary antibody and antigen (recombinant protein).