

BIN3 antibody

Catalog Number: 108503

Product name

BIN3 antibody

IP: 1:200-1:1000

IHC: 1:20-1:200

Specificity

Human, Mouse, Rat; other species not tested.

Antibody description

BIN3 Rabbit Polyclonal antibody. Positive IHC detected in human prostate cancer tissue. Positive IP detected in K-562 cells. Positive WB detected in K-562 cells, HeLa cells. Observed molecular weight by Western-blot: 30 kDa

Preparation

This antibody was obtained by immunization of BIN3 recombinant protein (Accession Number: NM_018688). Purification method: Antigen affinity purified.

Formulation

PBS with 0.1% sodium azide and 50% glycerol pH 7.3.

Storage

Store at -20°C. DO NOT ALIQUOT

Clonality

Polyclonal

Ig Type

Rabbit IgG

Applications

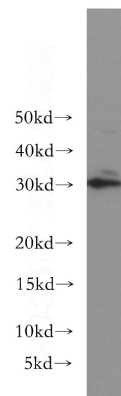
ELISA, WB, IHC, IP

Dilutions

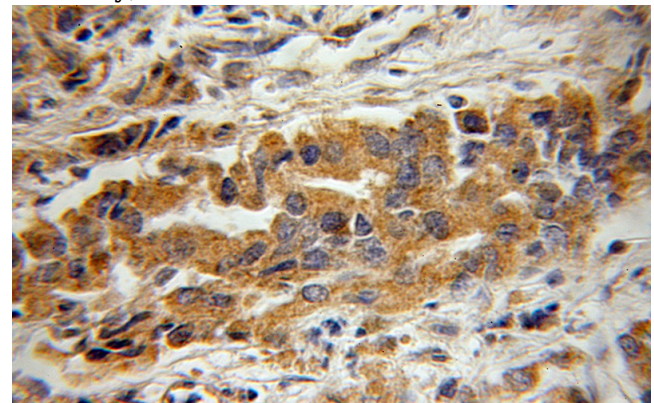
Recommended Dilution:

WB: 1:200-1:2000

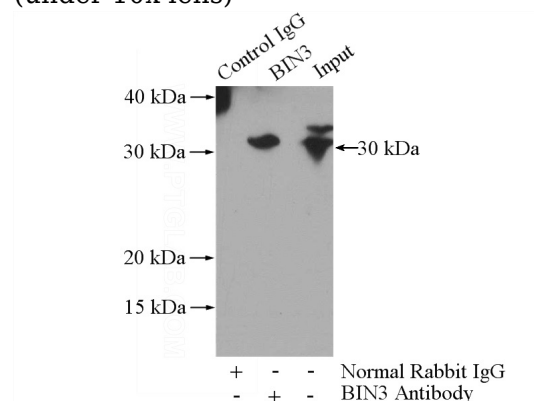
Validations



K-562 cells were subjected to SDS PAGE followed by western blot with Catalog No:117148(BIN3 antibody) at dilution of 1:300



Immunohistochemical of paraffin-embedded human prostate cancer using Catalog No:117148(BIN3 antibody) at dilution of 1:50 (under 10x lens)



IP Result of anti-BIN3 (IP:Catalog No:117148,

BIN3 antibody



Catalog Number: 108503

4ug; Detection:Catalog No:117148 1:300) with K-562 cells lysate 3200ug.