

MBD3 antibody

Catalog Number: 112503

Product name

MBD3 antibody

WB: 1:200-1:2000

IP: 1:200-1:2000

Specificity

Human, Mouse, Rat; other species not tested.

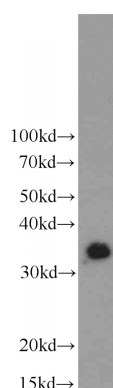
IHC: 1:20-1:200

IF: 1:20-1:200

Antibody description

MBD3 Rabbit Polyclonal antibody. Positive IP detected in mouse testis tissue. Positive WB detected in Y79 cells, COLO 320 cells, HeLa cells, Jurkat cells, MCF7 cells, mouse testis tissue. Positive IHC detected in human endometrial cancer tissue. Positive IF detected in HepG2 cells. Observed molecular weight by Western-blot: 33kd

Validations



Preparation

This antibody was obtained by immunization of MBD3 recombinant protein (Accession Number: NM_001281454). Purification method: Antigen affinity purified.

Y79 cells were subjected to SDS PAGE followed by western blot with Catalog No:112503(MBD3 antibody) at dilution of 1:600

Formulation

PBS with 0.02% sodium azide and 50% glycerol pH 7.3.

Storage

Store at -20°C. DO NOT ALIQUOT

Clonality

Polyclonal

Ig Type

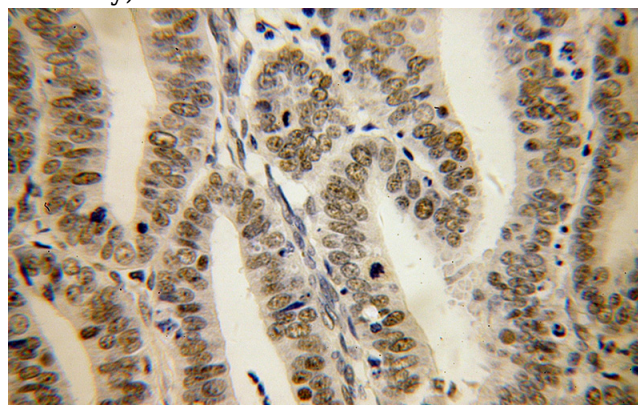
Rabbit IgG

Applications

ELISA, WB, IHC, IF, IP

Dilutions

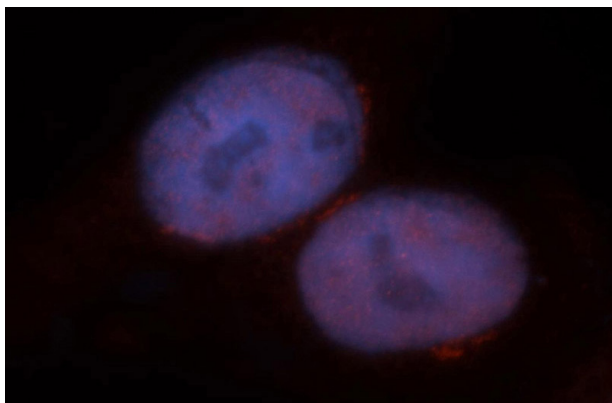
Recommended Dilution:



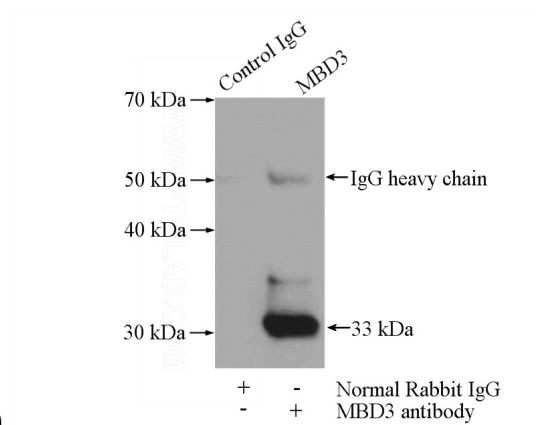
Immunohistochemical of paraffin-embedded human endometrial cancer using Catalog No:112503(MBD3 antibody) at dilution of 1:100 (under 40x lens)

MBD3 antibody

Catalog Number: 112503



Immunofluorescent analysis of HepG2 cells, using MBD3 antibody Catalog No:112503 at 1:50 dilution and Rhodamine-labeled goat anti-rabbit IgG (red). Blue pseudocolor = DAPI (fluorescent



DNA dye).

IP Result of anti-MBD3 (IP:Catalog No:112503, 4ug; Detection:Catalog No:112503 1:800) with mouse testis tissue lysate 4000ug.