

# Anti-ADAM15 antibody



Catalog Number: 101503

## Product name

Anti-ADAM15 antibody

## Immunogen

[Human ADAM15 \(His Tag\) recombinant protein](#)

## Specificity

Human ADAM15 / MDC15

## Antibody description

Rabbit monoclonal to ADAM15

## Preparation

This antibody was obtained from a rabbit immunized with purified, recombinant Human ADAM15 (rh ADAM15; NP\_997074.1; Met 1-Thr 696).

## Formulation

0.2  $\mu\text{m}$  filtered solution in PBS with 5% trehalose

## Storage

This antibody can be stored at 2°C-8°C for one month without detectable loss of activity. Antibody products are stable for twelve months from date of receipt when stored at -20°C to -80°C.

Preservative-Free.

Sodium azide is recommended to avoid contamination (final concentration 0.05%-0.1%). It is toxic to cells and should be disposed of properly. Avoid repeated freeze-thaw cycles.

## Clonality

Monoclonal

## Ig Type

Rabbit IgG

## Applications

ELISA, IHC-P, FCM, IHC, IF, ICC/IF

## Dilutions

ELISA: 0.1-0.2  $\mu\text{g}/\text{mL}$

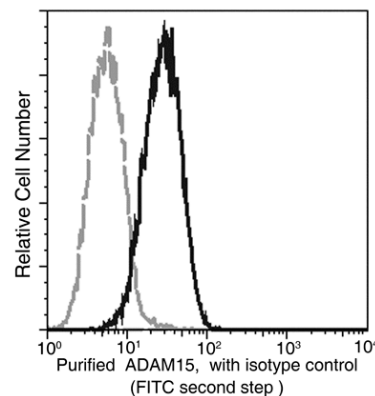
This antibody can be used at 0.1-0.2  $\mu\text{g}/\text{mL}$  with the appropriate secondary reagents to detect Human ADAM15. The detection limit for Human ADAM15 is approximately 0.00245 ng/well.

IHC-P: 0.5-5  $\mu\text{g}/\text{mL}$

FCM: 0.5-2  $\mu\text{g}/\text{Test}$

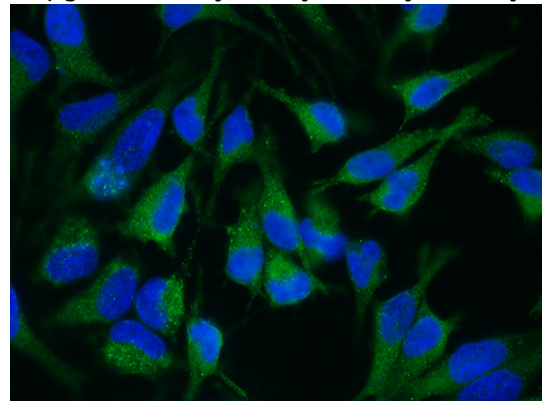
ICC/IF: 10-25  $\mu\text{g}/\text{mL}$

## Validations



ADAM15 / MDC15 Antibody, Rabbit MAb, Flow Cytometry

Profile of anti-ADAM15 reactivity on MCF-7 cells (1  $\mu\text{g}/\text{test}$ ) analyzed by flow cytometry.



ADAM15 / MDC15 Antibody, Rabbit MAb, Immunofluorescence

# Anti-ADAM15 antibody



Catalog Number: 101503

---

Immunofluorescence staining of Human ADAM15 in Hela cells. Cells were fixed with 4% PFA, permeabilized with 1% Triton X-100 in PBS, blocked with 10% serum, and incubated with rabbit anti-Human ADAM15 monoclonal antibody

(15 µg/ml) at 37°C 1 hour. Then cells were stained with the Alexa Fluor® 488-conjugated Goat Anti-rabbit IgG secondary antibody (green). Positive staining was localized to cytoplasm.