

# Anti-Human Serum Albumin (7D1) Mouse antibody



Catalog Number: 168103

## Product name

WB, ELISA

Anti-Human Serum Albumin (7D1) Mouse antibody

## Dilutions

WB: 1/2000

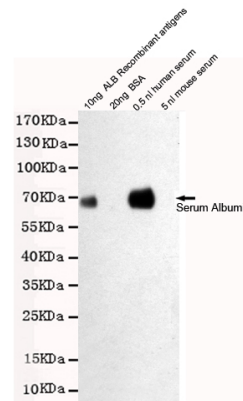
## Specificity

Human

## Validations

## Antibody description

Human Serum Albumin (7D1) Mouse monoclonal antibody



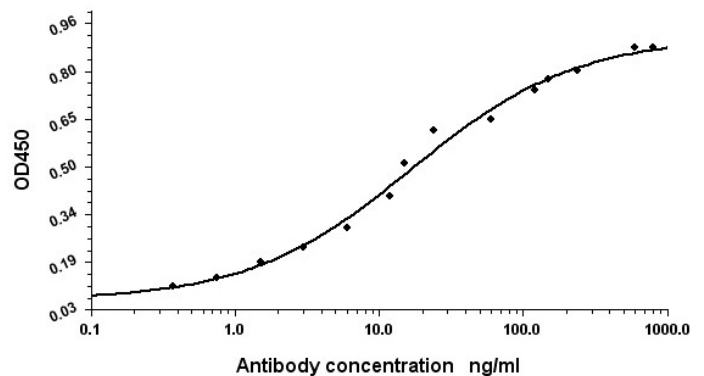
## Preparation

Antigen: Purified Human serum albumin.

Western blot detection of Human Serum Albumin in 0.5nl human serum and 10ng ALB Recombinant antigens cell lysates using Human Serum Albumin mouse mAb (1:2000 diluted). Predicted band size: 67KDa. Observed band size: 67KDa.

## Formulation

Purified mouse monoclonal in PBS(pH 7.4) containing with 0.02% sodium azide and 50% glycerol.



## Storage

Store at 4°C short term. Store at -20°C long term. Avoid freeze / thaw cycle.

Indirect ELISA assay for anti-Human Serum Albumin mouse mAb. Antigen coating concentration: 8ug/ml.

## Clonality

Monoclonal

## Ig Type

Mouse IgG1

## Applications