

Anti-Notch1 Rabbit antibody



Catalog Number: 167103

Product name

Anti-Notch1 Rabbit antibody

Specificity

Human, Mouse

Antibody description

Notch1 Rabbit polyclonal antibody

Preparation

Antigen: A synthesized peptide derived from human Notch1

Formulation

Rabbit IgG in phosphate buffered saline , pH 7.4, 150mM NaCl, 0.02% sodium azide and 50% glycerol.

Storage

Store at 4°C short term. Store at -20°C long term. Avoid freeze / thaw cycle.

Clonality

Polyclonal

Ig Type

Rabbit IgG

Applications

WB, IHC-P, ICC/IF, FC

Dilutions

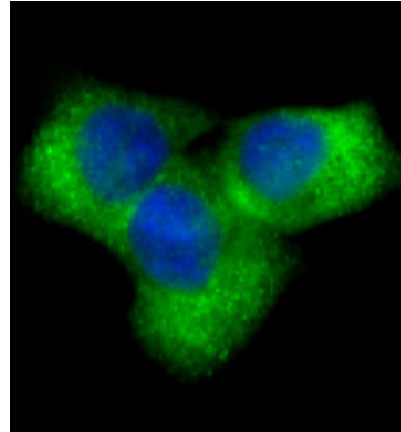
WB: 1/500-1/3000

IHC: 1/50-1/200

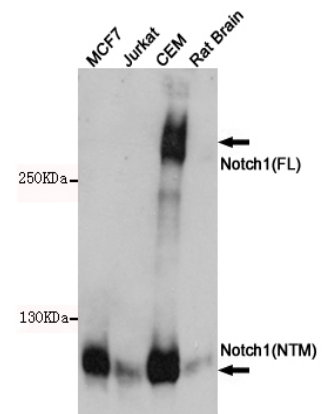
ICC/IF: 1/100-1/500

FC: 1/200-1/500

Validations

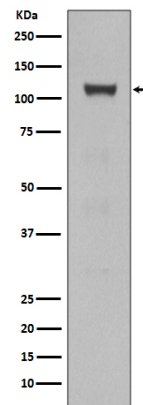


Immunofluorescent analysis of HeLa cells, using



Notch1 Antibody .

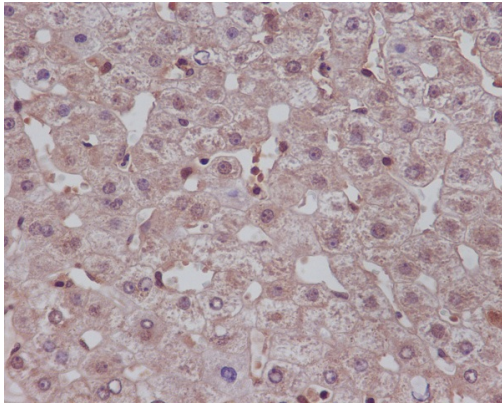
Western blot analysis of Notch1 expression in MCF7, Jurkat, CEM and Rat Brain cell lysates using Notch1 antibody at 1/1000 dilution. Predicted band size: 125 kDa. Observed band size: 120, 300 kDa.



Western blot analysis of NOTCH1 expression in HEK293 cell lysate.

Anti-Notch1 Rabbit antibody

Catalog Number: 167103



Immunohistochemical analysis of paraffin-embedded human liver, using Notch1 Antibody .