

Anti-Ubiquitin (linkage-specific K63) Rabbit antibody



Catalog Number: 167803

Product name

Rabbit IgG

Anti-Ubiquitin (linkage-specific K63) Rabbit antibody

Applications

WB, IHC-P, ICC/IF, FC

Specificity

Human, Mouse, Rat

Dilutions

WB: 1/1000

Antibody description

Ubiquitin (linkage-specific K63) Rabbit monoclonal antibody

IHC: 1/50

ICC/IF: 1/100

Preparation

Antigen: A synthetic peptide of human Ubiquitin (linkage-specific K63)

FC: 1/50

Validations

Formulation

50nM Tris-Glycine(pH 7.4), 0.15M NaCl, 40%Glycerol, 0.01% sodium azide and 0.05% BSA

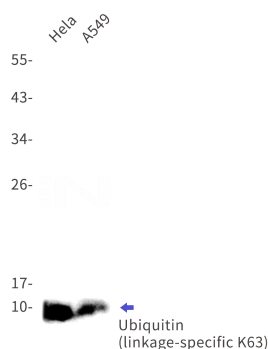
Storage

Store at 4°C short term. Store at -20°C long term. Avoid freeze / thaw cycle.

Clonality

Monoclonal

Ig Type



Western blot detection of Ubiquitin (linkage-specific K63) in HeLa,A549 cell lysates using Ubiquitin (linkage-specific K63) Rabbit mAb(1:1000 diluted).Predicted band size:8kDa.Observed band size:8kDa.