

Syntenin-1 antibody



Catalog Number: 115803

Product name

Syntenin-1 antibody

Specificity

Human; other species not tested.

Antibody description

Syntenin-1 Rabbit Polyclonal antibody. Positive FC detected in HepG2 cells. Positive IF detected in HepG2 cells. Positive IHC detected in human liver tissue, human heart tissue. Positive IP detected in HeLa cells. Positive WB detected in HepG2 cells, A549 cells, HeLa cells, human placenta tissue, MCF7 cells. Observed molecular weight by Western-blot: 32 kDa

Preparation

This antibody was obtained by immunization of Syntenin-1 recombinant protein (Accession Number: NM_005625). Purification method: Antigen affinity purified.

Formulation

PBS with 0.02% sodium azide and 50% glycerol pH 7.3.

Storage

Store at -20°C. DO NOT ALIQUOT

Clonality

Polyclonal

Ig Type

Rabbit IgG

Applications

ELISA, WB, IHC, FC, IP, IF

Dilutions

Recommended Dilution:

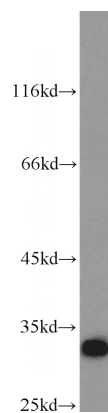
WB: 1:500-1:5000

IP: 1:500-1:5000

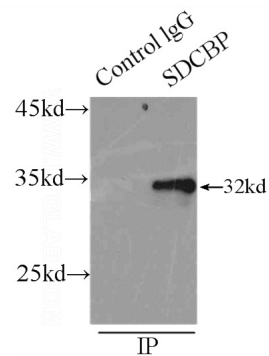
IHC: 1:20-1:200

IF: 1:50-1:500

Validations



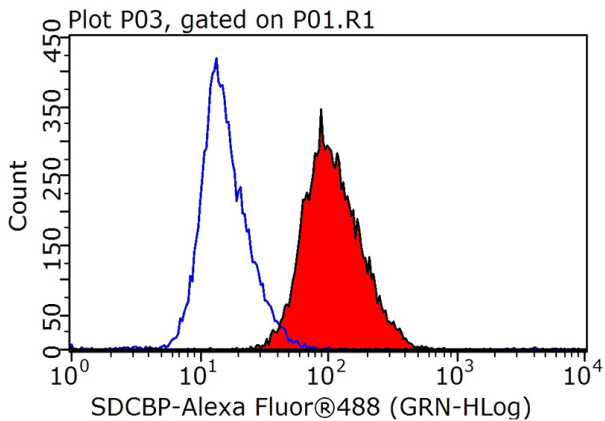
HepG2 cells were subjected to SDS PAGE followed by western blot with Catalog No:115803(SDCBP antibody) at dilution of 1:1000



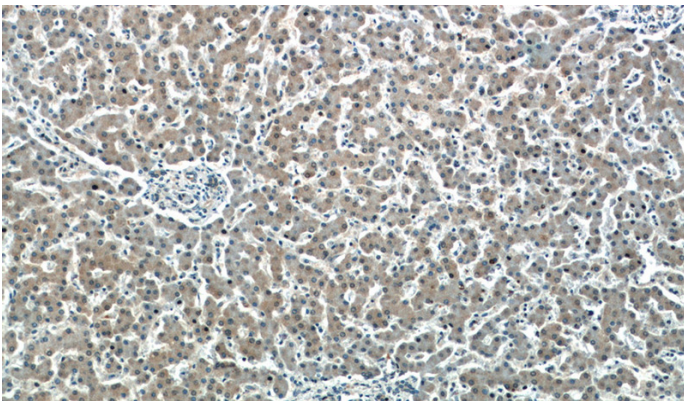
IP Result of anti-SDCBP (IP:Catalog No:115803, 3ug; Detection:Catalog No:115803 1:1000) with HeLa cells lysate 2500ug.

Syntenin-1 antibody

Catalog Number: 115803

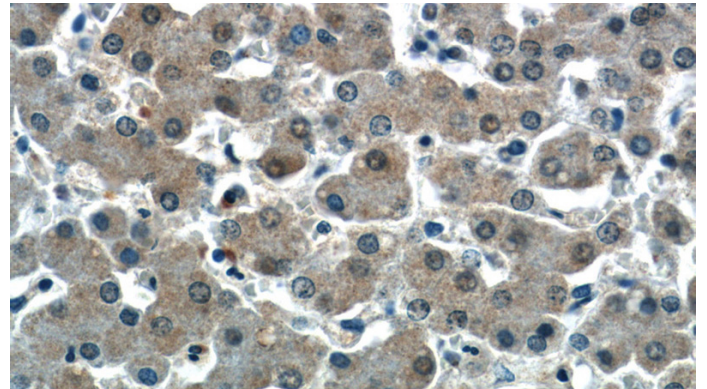


1X10⁶ HepG2 cells were stained with 0.2ug SDCBP antibody (Catalog No:115803, red) and control antibody (blue). Fixed with 90% MeOH blocked with 3% BSA (30 min). Alexa Fluor 488-conjugated AffiniPure Goat Anti-Rabbit IgG(H+L) with dilution 1:1000.

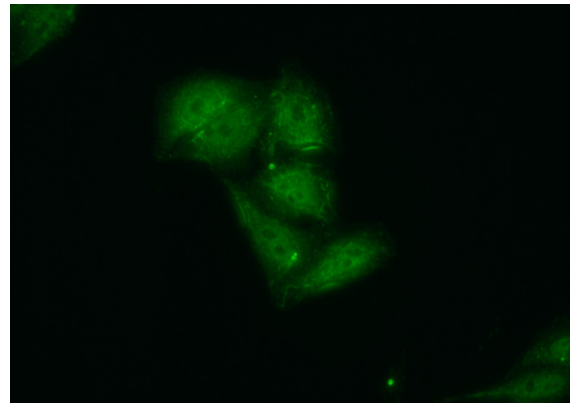


Immunohistochemistry of paraffin-embedded human liver slide using Catalog No:115803(SDCBP Antibody) at dilution of 1:50

(under 10x lens)



Immunohistochemistry of paraffin-embedded human liver slide using Catalog No:115803(SDCBP Antibody) at dilution of 1:50 (under 40x lens)



Immunofluorescent analysis of (10% Formaldehyde) fixed HepG2 cells using Catalog No:115803(SDCBP Antibody) at dilution of 1:50 and Alexa Fluor 488-conjugated AffiniPure Goat Anti-Rabbit IgG(H+L)