

# RPGR antibody

Catalog Number: 114803

## Product name

RPGR antibody

WB: 1:200-1:2000

IHC: 1:20-1:200

## Specificity

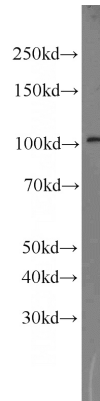
Human, Mouse; other species not tested.

IF: 1:10-1:100

## Antibody description

RPGR Rabbit Polyclonal antibody. Positive WB detected in mouse eye tissue, mouse liver tissue, SH-SY5Y cells, Y79 cells. Positive IF detected in hTERT-RPE1 cells. Positive IHC detected in human kidney tissue, human heart tissue. Observed molecular weight by Western-blot: 100-105 kDa, 70 kDa

## Validations



## Preparation

This antibody was obtained by immunization of RPGR recombinant protein (Accession Number: BC031624). Purification method: Antigen affinity purified.

mouse eye tissue were subjected to SDS PAGE followed by western blot with Catalog No:114803(RPGR antibody) at dilution of 1:500

## Formulation

PBS with 0.02% sodium azide and 50% glycerol pH 7.3.

## Storage

Store at -20°C. DO NOT ALIQUOT

## Clonality

Polyclonal

## Ig Type

Rabbit IgG

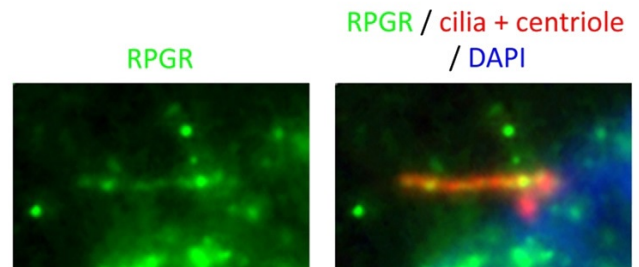
## Applications

ELISA, WB, IF, IHC

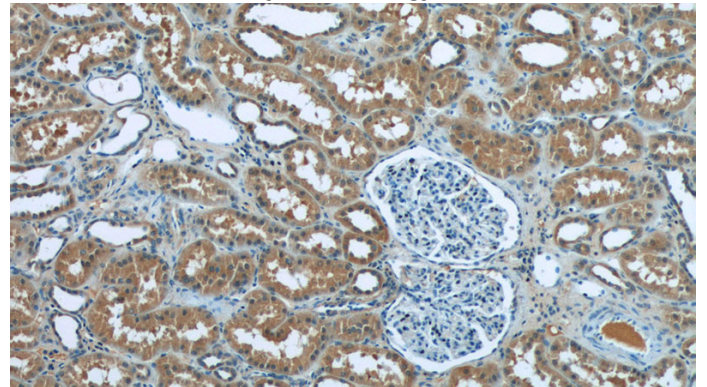
## Dilutions

Recommended Dilution:

IF result of RPGR in hTERT-RPE1 cell



IF result of anti-RPGR(Catalog No:114803) in hTERT-RPE1 cell by Dr. Seongjin Seo.



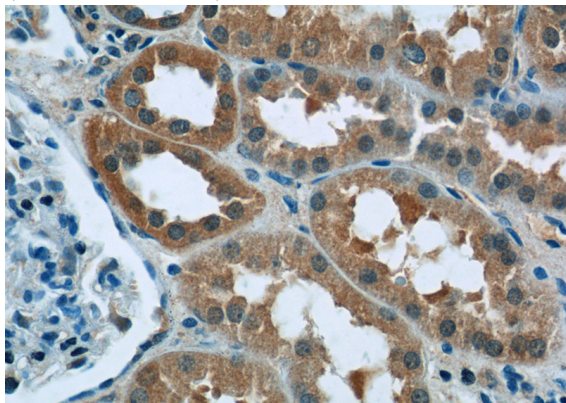
Immunohistochemistry of paraffin-embedded human kidney tissue slide using Catalog

# RPGR antibody

Catalog Number: 114803

---

No:114803(RPGR Antibody) at dilution of 1:50  
(under 10x lens)



Immunohistochemistry of paraffin-embedded  
human kidney tissue slide using Catalog  
No:114803(RPGR Antibody) at dilution of 1:50  
(under 40x lens)