

# TROVE2 antibody



Catalog Number: 116403

## Product name

TROVE2 antibody

## Specificity

Human, Mouse, Rat; other species not tested.

## Antibody description

TROVE2 Rabbit Polyclonal antibody. Positive WB detected in MCF7 cells, HeLa cells, mouse thymus tissue, PC-3 cells, rat spleen tissue. Positive IF detected in PC-3 cells. Observed molecular weight by Western-blot: 60 kDa

## Preparation

This antibody was obtained by immunization of TROVE2 recombinant protein (Accession Number: XM\_017002181). Purification method: Antigen affinity purified.

## Formulation

PBS with 0.1% sodium azide and 50% glycerol pH 7.3.

## Storage

Store at -20°C. DO NOT ALIQUOT

## Clonality

Polyclonal

## Ig Type

Rabbit IgG

## Applications

ELISA, WB, IF

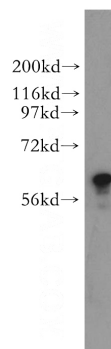
## Dilutions

Recommended Dilution:

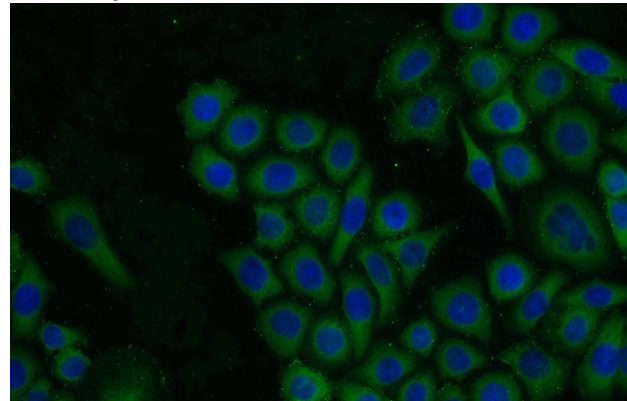
WB: 1:500-1:5000

IF: 1:10-1:100

## Validations



MCF7 cells were subjected to SDS PAGE followed by western blot with Catalog No:116403(TROVE2 antibody) at dilution of 1:500



Immunofluorescent analysis of PC-3 cells using Catalog No:116403(TROVE2 Antibody) at dilution of 1:25 and Alexa Fluor 488-conjugated AffiniPure Goat Anti-Rabbit IgG(H+L)