

Anti-EPHA2 antibody



Catalog Number: 175403

Product name

Anti-EPHA2 antibody

Specificity

Human, Mouse, Rat, Dog, Cow, Monkey

Antibody description

Rabbit polyclonal antibody to EPHA2

Preparation

This antigen of this antibody was klh conjugated synthetic peptide derived from human epha2 901-976/976

Formulation

Liquid, 0.01M TBS(pH7.4) with 1% BSA, 0.03% Proclin300 and 50% Glycerol.

Storage

Store at -20°C for one year. Avoid repeated freeze/thaw cycles. The lyophilized antibody is stable at room temperature for at least one month and for greater than a year when kept at -20°C. When reconstituted in sterile pH 7.4 0.01M PBS or diluent of antibody the antibody is stable for at least two weeks at 2-4°C.

Clonality

Polyclonal

Ig Type

Rabbit IgG

Applications

WB

Dilutions

WB:1:500-2000

Validations

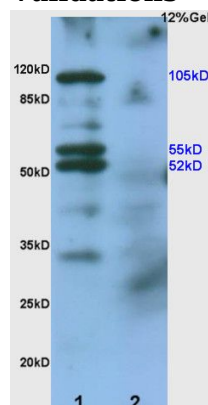
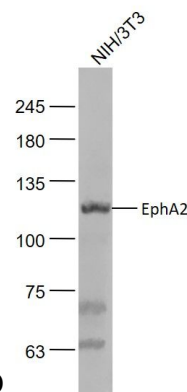


Fig1: Sample:; Human colon carcinoma lysates Lysate at 30 ug; Intestine (Mouse) Lysate at 30 ug; Primary: Anti- EphA2/Eph receptor A2 at 1/200 dilution; Secondary: HRP conjugated Goat-Anti-rabbit IgG (bs-0295G-HRP) at 1/3000 dilution; Predicted band size : 105kD; Observed band size :



105kD, 52/55kD

Fig2: Sample:; NIH/3T3(Mouse) Cell Lysate at 30 ug; Primary: Anti-Epha2 at 1/1000 dilution; Secondary: IRDye800CW Goat Anti-Rabbit IgG at 1/20000 dilution; Predicted band size: 105 kD; Observed band size: 115 kD