

# Human CLN2 (His Tag) recombinant protein



Catalog Number: 500403

## General Information

### Gene Name Synonym

Cell growth-inhibiting gene 1 protein; Lysosomal pepstatin-insensitive protease; Tripeptidyl aminopeptidase; Tripeptidyl-peptidase I

### Protein Construction

A DNA sequence encoding the pro form of human TPP1 (AAH14863.1) (Met 1-Pro 563) was fused with a polyhistidine tag at the C-terminus.

### Organism

Human

### Expression Host

Baculovirus-Insect Cells

## QC Testing

### Purity

> 95 % as determined by SDS-PAGE

### Endotoxin

< 1.0 EU per  $\mu\text{g}$  of the protein as determined by the LAL method

### Stability

Samples are stable for up to twelve months from date of receipt at  $-70^{\circ}\text{C}$

### Predicted N terminal

Ser 20

### Molecular Mass

The secreted recombinant human TPP1 (pro form) comprises 554 amino acids and has a predicted molecular mass of 60.7 kDa. The apparent molecular mass of rhTPP1 is approximately 60 kDa in SDS-PAGE under reducing conditions.

### Formulation

Lyophilized from sterile 20mM Tris, 500mM NaCl, pH 7.4, 10% gly

1. 5 % trehalose and mannitol are added as protectants before lyophilization.
2. Please contact us for any concerns or special requirements.

## Usage Guide

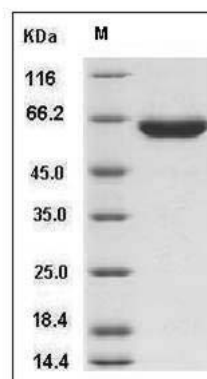
### Storage

Store it under sterile conditions at  $-20^{\circ}\text{C}$  to  $-80^{\circ}\text{C}$ . It is recommended that the protein be aliquoted for optimal storage. Avoid repeated freeze-thaw cycles.

### Reconstitution

Adding sterile water, prepare a stock solution of 0.25 mg/ml. Concentration is measured by UV-Vis.

### SDS-PAGE



Human TPP1 / CLN2 Protein (His Tag) SDS-PAGE