

# Anti-Cathepsin L/CTSL1 antibody



Catalog Number: 100403

## Product name

Anti-Cathepsin L/CTSL1 antibody

## Immunogen

[Human Cathepsin L/CTSL1 \(His Tag\) recombinant protein](#)

## Specificity

Human Cathepsin L / CTSL / CTSL1

## Antibody description

Rabbit monoclonal to Cathepsin L/CTSL1

## Preparation

This antibody was obtained from a rabbit immunized with purified, recombinant Human Cathepsin L / CTSL / CTSL1 (rh Cathepsin L / CTSL / CTSL1; NP\_001903.1; Met1-Val333).

## Formulation

0.2 µm filtered solution in PBS with 5% trehalose

## Storage

This antibody can be stored at 2°C-8°C for one month without detectable loss of activity. Antibody products are stable for twelve months from date of receipt when stored at -20°C to -80°C. Preservative-Free.

Sodium azide is recommended to avoid contamination (final concentration 0.05%-0.1%). It is toxic to cells and should be disposed of properly. Avoid repeated freeze-thaw cycles.

## Clonality

Monoclonal

## Ig Type

Rabbit IgG

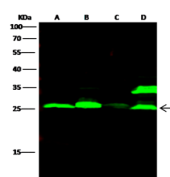
## Applications

WB

## Dilutions

WB: 1-2 µg/mL

## Validations



Items \ Lanes	A	B	C	D
Sample (whole cell lysate)	HepG2	A549	HCT116	U87MG
Sample Volume (µg/lane)	30			
Gel	13% SDS-PAGE reducing gel			
Recommended Concentration	1-2 µg/ml			
Secondary Antibody	Dylight 800-labeled Antibody To Rabbit IgG (H+L), at 1:5000 dilution.			

Cathepsin L1 / CTSL1 Antibody, Rabbit MAb, Western blot