

# AMPD3 antibody

Catalog Number: 108003

## Product name

AMPD3 antibody

WB: 1:500-1:5000

IP: 1:200-1:2000

## Specificity

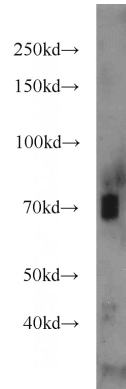
Human, Mouse, Rat; other species not tested.

IHC: 1:20-1:200

## Antibody description

AMPD3 Rabbit Polyclonal antibody. Positive IHC detected in human placenta tissue, human colon tissue. Positive IP detected in mouse kidney tissue. Positive WB detected in mouse kidney tissue, HEK-293 cells, mouse lung tissue, rat kidney tissue. Observed molecular weight by Western-blot: 70 kDa, 90 kDa

## Validations



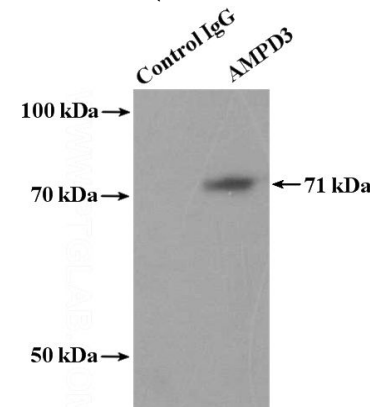
## Preparation

This antibody was obtained by immunization of AMPD3 recombinant protein (Accession Number: NM\_000480). Purification method: Antigen Affinity purified.

mouse kidney tissue were subjected to SDS PAGE followed by western blot with Catalog No:108003(AMPD3 antibody) at dilution of 1:1000

## Formulation

PBS with 0.02% sodium azide and 50% glycerol pH 7.3.



## Storage

Store at -20°C. DO NOT ALIQUOT

## Clonality

Polyclonal

## Ig Type

Rabbit IgG

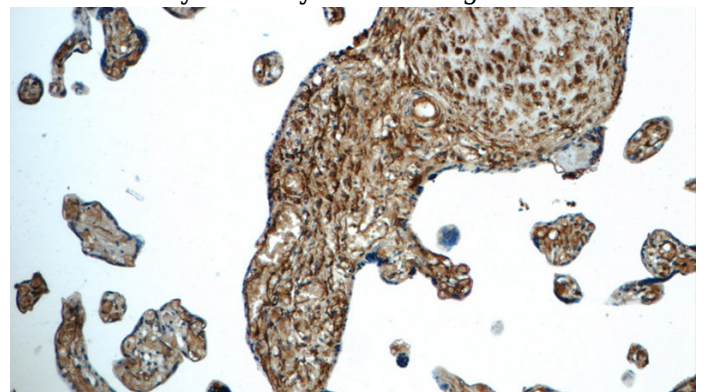
## Applications

ELISA, WB, IHC, IP

## Dilutions

Recommended Dilution:

IP Result of anti-AMPD3 (IP:Catalog No:108003, 4ug; Detection:Catalog No:108003 1:800) with mouse kidney tissue lysate 4800ug.

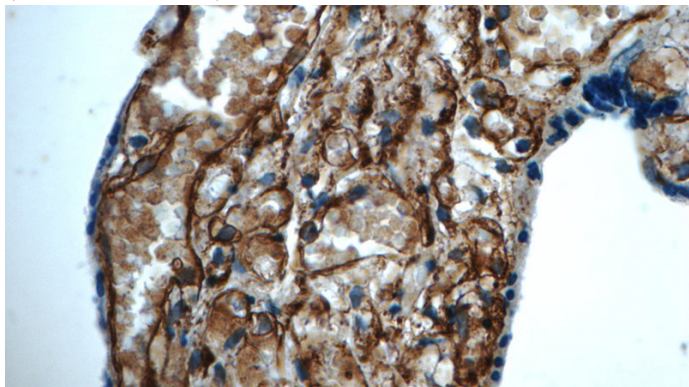


# AMPD3 antibody

Catalog Number: 108003

---

Immunohistochemistry of paraffin-embedded human placenta tissue slide using Catalog No:108003(AMPD3 Antibody) at dilution of 1:50 (under 10x lens)



Immunohistochemistry of paraffin-embedded human placenta tissue slide using Catalog No:108003(AMPD3 Antibody) at dilution of 1:50 (under 40x lens)