

# Anti-Phospho-PKA RIIalpha (Ser99) Rabbit antibody



Catalog Number: 167003

## Product name

Anti-Phospho-PKA RIIalpha (Ser99) Rabbit antibody

## Specificity

Human, Mouse, Rat, Pig

## Antibody description

Phospho-PKA RIIalpha (Ser99) Rabbit polyclonal antibody

## Preparation

Antigen: A synthesized peptide derived from human Phospho-PKA R2 (S99)

## Formulation

Rabbit IgG in phosphate buffered saline , pH 7.4, 150mM NaCl, 0.02% sodium azide and 50% glycerol.

## Storage

Store at 4°C short term. Store at -20°C long term. Avoid freeze / thaw cycle.

## Clonality

Polyclonal

## Ig Type

Rabbit IgG

## Applications

WB, IHC-P, ICC/IF, IP

## Dilutions

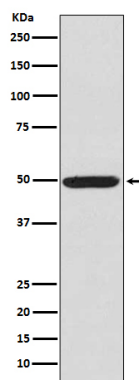
WB: 1/500-1/2000

IHC: 1/50-1/200

ICC/IF: 1/50-1/200

IP: 1/50

## Validations



Western blot analysis of Phospho-PKA R2 (Ser99) in K562 cell lysate.