

Anti-Zfp352 antibody



Catalog Number: 175792

Product name

Anti-Zfp352 antibody

Specificity

Mouse

Antibody description

Rabbit polyclonal antibody to Zfp352

Preparation

This antigen of this antibody was synthetic peptide within mouse zfp352 aa 100-150.

Formulation

Liquid, 1*TBS (pH7.4), 0.2% BSA, 50% Glycerol.
Preservative: 0.05% Sodium Azide.

Storage

Store at +4°C after thawing. Aliquot store at -20°C. Avoid repeated freeze / thaw cycles.

Clonality

Polyclonal

Ig Type

Rabbit IgG

Applications

WB, ICC

Dilutions

WB: 1:500-1:1,000

ICC: 1:50-1:200

Validations

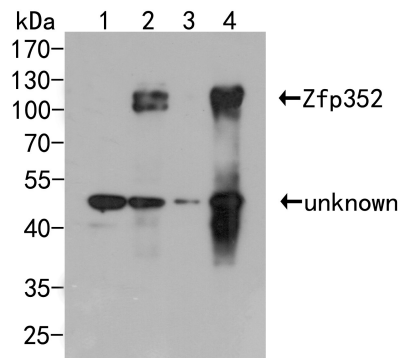


Fig1:: Western blot analysis of Zfp352 on different lysates. Proteins were transferred to a PVDF membrane and blocked with 5% BSA in PBS for 1 hour at room temperature. The primary antibody (1/1000) was used in 5% BSA at room temperature for 2 hours. Goat Anti-Rabbit IgG - HRP Secondary Antibody (HA1001) at 1:5,000 dilution was used for 1 hour at room temperature.; Positive control.; Lane 1: Non-transfected 293T cells lysate; Lane 2: GFP-tagged Zfp352 transfected 293T cells lysate; Lane 3: Non-transfected 293F cells lysate; Lane 4: GFP-tagged Zfp352 transfected 293F cells lysate

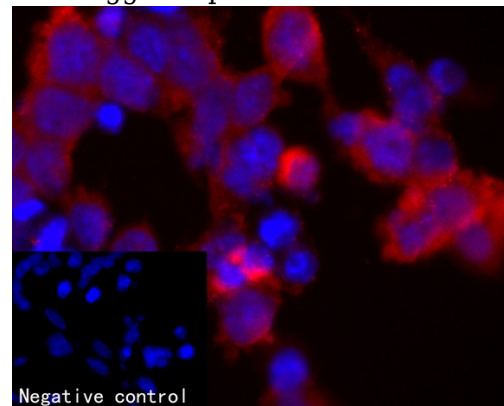


Fig2:: ICC staining of Zfp352 in Non-transfected 293T cells and GFP-tagged Zfp352 transfected 293T cells (red). Formalin fixed cells were permeabilized with 0.1% Triton X-100 in TBS for 10 minutes at room temperature and blocked with 1% Blocker BSA for 15 minutes at room temperature. Cells were probed with the primary antibody (1/50) for 1 hour at room temperature, washed with PBS. Alexa Fluor®594 Goat anti-Rabbit IgG was used as the secondary antibody at 1/100 dilution. The nuclear counter stain is DAPI (blue).