

Anti-CARHSP1 antibody



Catalog Number: 104792

Product name

Anti-CARHSP1 antibody

Immunogen

[Human CARHSP1 \(His Tag\) recombinant protein](#)

Specificity

Human CARHSP1

Antibody description

Rabbit polyclonal to CARHSP1

Preparation

Produced in rabbits immunized with purified, recombinant Human CARHSP1 (rh CARHSP1; Q9Y2V2; Met1-Ser147). CARHSP1 specific IgG was purified by Human CARHSP1 affinity chromatography.

Formulation

0.2 μ m filtered solution in PBS

Storage

This antibody can be stored at 2°C-8°C for one month without detectable loss of activity. Antibody products are stable for twelve months from date of receipt when stored at -20°C to -80°C.

Preservative-Free.

Sodium azide is recommended to avoid contamination (final concentration 0.05%-0.1%). It is toxic to cells and should be disposed of properly. Avoid repeated freeze-thaw cycles.

Clonality

Polyclonal

Ig Type

Rabbit IgG

Applications

ELISA, WB, IP

Dilutions

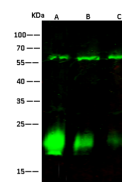
WB: 2-10 μ g/ml

ELISA: 0.1-0.2 μ g/mL

This antibody can be used at 0.1-0.2 μ g/mL with the appropriate secondary reagents to detect Human CARHSP1. The detection limit for Human CARHSP1 is < 0.039 ng/well.

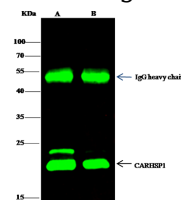
IP: 0.5-2 μ g/mg of lysate

Validations



Lanes	A	B	C
Items			
Sample (whole cell lysate)	HepG2	293T	HeLa
Sample Volume (μ g/lane)	30	30	30
Gel	13% SDS-PAGE reducing gel		
Recommended concentration	2-10 μ g/ml		
Secondary Antibody	Dylight 800-labeled Antibody to Rabbit IgG (H+L), at 1:5000 dilution.		
Developed using Odyssey imaging system.			
Explanation	Predicted band size : 16 kDa Observed band size : 22 kDa Additional bands at : 60 kDa (We are unsure as to the identity of these extra bands. They are possible non-		

CARHSP1 Antibody, Rabbit PAb, Antigen Affinity



Lanes	A	B
Items		
Sample (whole cell lysate)	HepG2	293T
Sample quantity	0.5 mg	
IP antibody quantity	2 μ g	
Protein G agarose	15 μ l of 50% Protein G Agarose	
Gel	13% SDS-PAGE reducing gel	
Primary antibody	His-CARHSP1 antibody at 5 μ g/ml	
Secondary antibody	Dylight 800-labeled antibody to rabbit IgG (H+L), at 1:5000 dilution	

Purified, Western blot

CARHSP1 Antibody, Rabbit PAb, Antigen Affinity

Purified, Immunoprecipitation