

CLIP1 antibody

Catalog Number: 109392

Product name

CLIP1 antibody

IP: 1:1000-1:10000

IF: 1:20-1:200

Specificity

Human, Mouse, Rat; other species not tested.

Antibody description

CLIP1 Rabbit Polyclonal antibody. Positive WB detected in HeLa cells, HEK-293 cells, MCF7 cells, mouse kidney tissue, rat kidney tissue, U-937 cells. Positive IP detected in HeLa cells. Positive IF detected in HeLa cells. Observed molecular weight by Western-blot: 160-170 kDa, 135 kDa

Preparation

This antibody was obtained by immunization of CLIP1 recombinant protein (Accession Number: NM_001247997). Purification method: Antigen Affinity purified.

Formulation

PBS with 0.02% sodium azide and 50% glycerol pH 7.3.

Storage

Store at -20°C. DO NOT ALIQUOT

Clonality

Polyclonal

Ig Type

Rabbit IgG

Applications

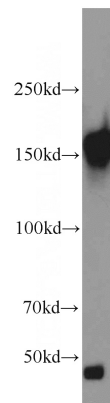
ELISA, WB, IP, IF

Dilutions

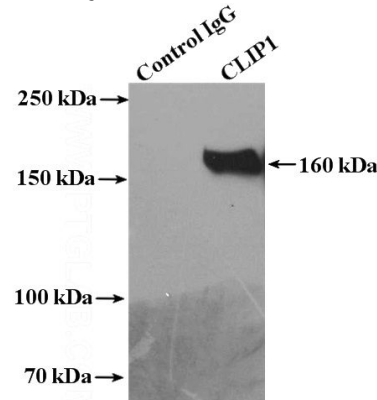
Recommended Dilution:

WB: 1:1000-1:10000

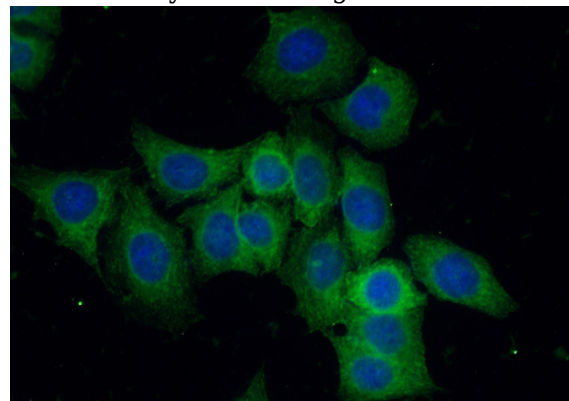
Validations



HeLa cells were subjected to SDS PAGE followed by western blot with Catalog No:109392(CLIP1 antibody) at dilution of 1:2000



IP Result of anti-CLIP1 (IP:Catalog No:109392, 4ug; Detection:Catalog No:109392 1:2000) with HeLa cells lysate 2400ug.



Immunofluorescent analysis of (-20oc Ethanol) fixed HeLa cells using Catalog No:109392(CLIP1

CLIP1 antibody



Catalog Number: 109392

Antibody) at dilution of 1:100 and Alexa Fluor 488- conjugated AffiniPure Goat Anti-Rabbit IgG(H+L)