

RRAGC Polyclonal Antibody



Catalog Number: 165392

Product name

RRAGC Polyclonal Antibody

Specificity

Human, Mouse, Rat

Antibody description

Polyclonal antibody to RRAGC

Preparation

Antigen: Recombinant fusion protein containing a sequence corresponding to amino acids 1-250 of human RRAGC (NP_071440.1).

Formulation

PBS with 0.02% sodium azide, 50% glycerol, pH7.3.

Storage

Store at -20°C. Avoid freeze / thaw cycles.

Clonality

Polyclonal

Ig Type

Rabbit IgG

Applications

WB, IHC, IF

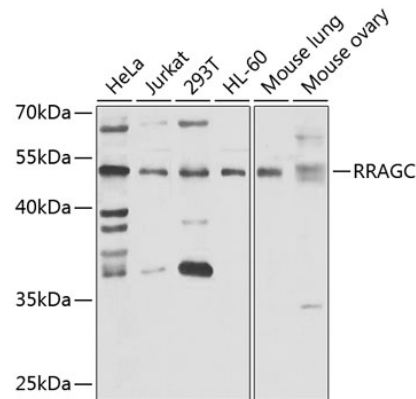
Dilutions

WB 1:500 - 1:2000

IHC 1:50 - 1:200

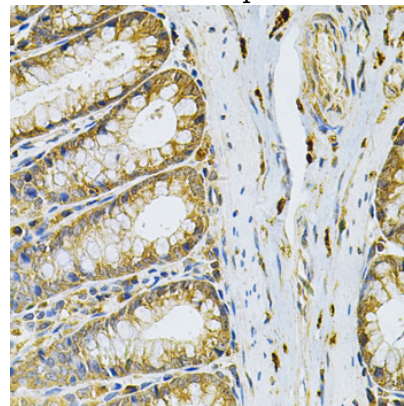
IF 1:50 - 1:200

Validations



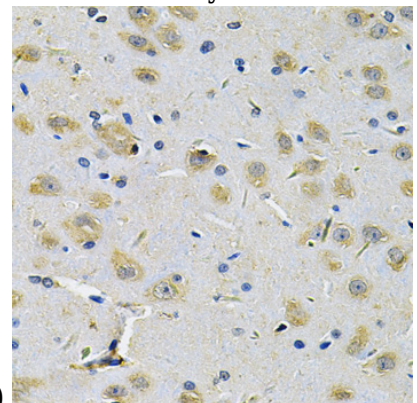
Western blot - RRAGC Polyclonal Antibody

Western blot analysis of extracts of various cell lines, using RRAGC antibody at 1:1000 dilution. Secondary antibody: HRP Goat Anti-Rabbit IgG (H+L) at 1:10000 dilution. Lysates/proteins: 25ug per lane. Blocking buffer: 3% nonfat dry milk in TBST. Detection: ECL Enhanced Kit. Exposure time: 30s.



Immunohistochemistry - RRAGC Polyclonal Antibody

Immunohistochemistry of paraffin-embedded rat intestine using RRAGC Antibody at dilution of



1:100 (40x lens).

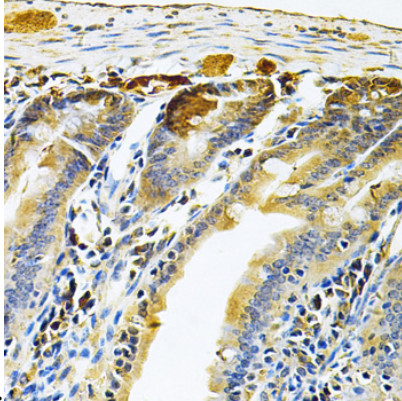
RRAGC Polyclonal Antibody



Catalog Number: 165392

Immunohistochemistry - RRAGC Polyclonal Antibody

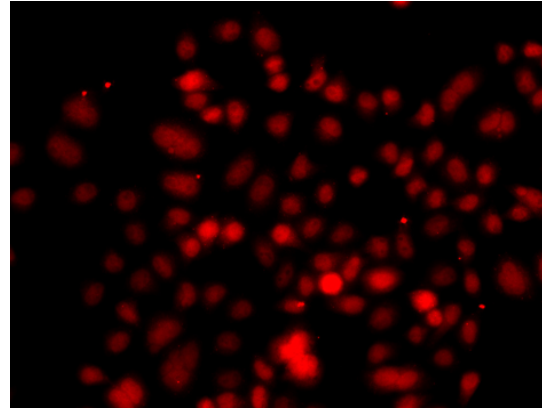
Immunohistochemistry of paraffin-embedded rat brain using RRAGC Antibody at dilution of 1:100



(40x lens).

Immunohistochemistry - RRAGC Polyclonal Antibody

Immunohistochemistry of paraffin-embedded mouse intestine using RRAGC Antibody at dilution of 1:100 (40x lens).



Immunofluorescence - RRAGC Polyclonal Antibody

Immunofluorescence analysis of A549 cells using RRAGC antibody .