

# Human PSG1/PS-beta-G-1 (His Tag) recombinant protein



Catalog Number: 501392

## General Information

### Gene Name Synonym

CD66 antigen-like family member F; Fetal liver non-specific cross-reactive antigen 1/2; PSG95; Pregnancy-specific beta-1 glycoprotein C/D

### Protein Construction

A DNA sequence encoding the human PSG1 (NP\_001171754.1) (Met1-Pro419) was expressed with a polyhistidine tag at the C-terminus.

### Organism

Human

### Expression Host

Human Cells

## QC Testing

### Purity

> 95 % as determined by SDS-PAGE.

### Endotoxin

<1.0 EU per  $\mu\text{g}$  protein as determined by the LAL method.

### Stability

Samples are stable for up to twelve months from date of receipt at  $-70^{\circ}\text{C}$

### Predicted N terminal

Gln 35

## Molecular Mass

The recombinant human PSG1 consists 396 amino acids and predicts a molecular mass of 44.9 kDa.

## Formulation

Lyophilized from sterile PBS, pH 7.4.

1. 5 % trehalose and mannitol are added as protectants before lyophilization.
2. Please contact us for any concerns or special requirements.

## Usage Guide

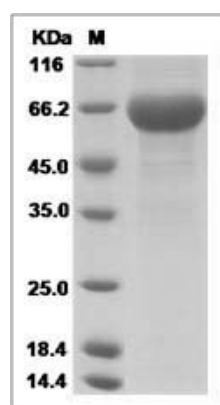
### Storage

Store it under sterile conditions at  $-20^{\circ}\text{C}$  to  $-80^{\circ}\text{C}$ . It is recommended that the protein be aliquoted for optimal storage. Avoid repeated freeze-thaw cycles.

### Reconstitution

Adding sterile water, prepare a stock solution of 0.25 mg/ml. Concentration is measured by UV-Vis.

## SDS-PAGE



PSG1 protein SDS-PAGE