

# Anti-STAT1 antibody



Catalog Number: 101392

## Product name

Anti-STAT1 antibody

## Specificity

Human STAT1

## Antibody description

Rabbit polyclonal to STAT1

## Preparation

Produced in rabbits immunized with a synthetic peptide corresponding to the center region of the Human STAT1, and purified by antigen affinity chromatography.

## Formulation

0.2 µm filtered solution in PBS

## Storage

This antibody can be stored at 2°C-8°C for one month without detectable loss of activity. Antibody products are stable for twelve months from date of receipt when stored at -20°C to -80°C.

Preservative-Free.

Sodium azide is recommended to avoid contamination (final concentration 0.05%-0.1%). It is toxic to cells and should be disposed of properly. Avoid repeated freeze-thaw cycles.

## Clonality

Polyclonal

## Ig Type

Rabbit IgG

## Applications

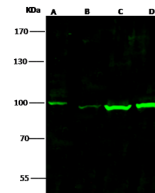
WB, IP

## Dilutions

WB: 5-10 µg/ml

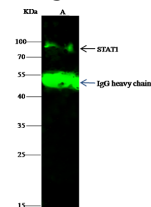
IP: 0.5-2 uL/mg of lysate

## Validations



Items	Lanes	A	B	C	D
Sample (whole cell lysate)		A431	Jurkat	K562	MCF7
Sample Volume (µg/lane)		30	30	30	30
Gel	7.5% SDS-PAGE reducing gel				
Recommended Concentration	5-10 µg/ml				
Secondary Antibody	Dylight 800-labeled Antibody To Rabbit IgG (H+L), at 1:5000 dilution.				
Explanation	Developed using Odyssey imaging system. Predicted band size : 87 kDa Observed band size : 100 kDa				

## STAT1 Antibody, Rabbit PAb, Antigen Affinity



Items	Lanes	A
Sample (whole cell lysate)		Hela
Sample quantity		0.5 mg
IP antibody quantity		2 µg
Immunomagnetic beads Protein G		60 ng
Gel	13% SDS-PAGE reducing gel	
Primary antibody	KJ21-SMCC-SINO1080 antibody at 10 µg/ml	
Secondary antibody	Dylight 800-labeled antibody to rabbit IgG (H+L), at 1:5000 dilution	

Purified, Western blot

## STAT1 Antibody, Rabbit PAb, Antigen Affinity

Purified, Immunoprecipitation