

# Anti-HDAC2 Rabbit antibody



Catalog Number: 166692

## Product name

Anti-HDAC2 Rabbit antibody

## Specificity

Human, Mouse, Rat

## Antibody description

HDAC2 Rabbit polyclonal antibody

## Preparation

Antigen: Peptide sequence around aa. 392~396 (E-D-S-G-D) derived from Human HDAC2.

## Formulation

Supplied at 1.0mg/mL in phosphate buffered saline (without Mg<sup>2+</sup> and Ca<sup>2+</sup>), pH 7.4, 150mM NaCl, 0.02% sodium azide and 50% glycerol.

## Storage

Store at 4°C short term. Store at -20°C long term. Avoid freeze / thaw cycle.

## Clonality

Polyclonal

## Ig Type

Rabbit IgG

## Applications

WB, IHC-P, ICC/IF

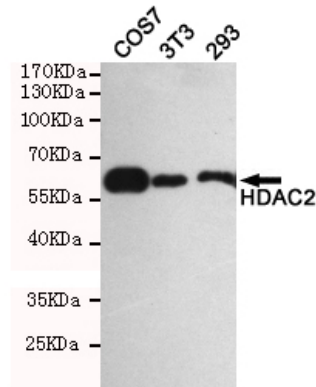
## Dilutions

WB: 1/1/500

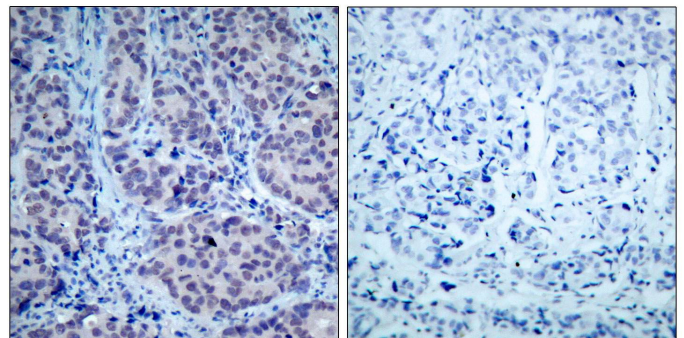
ICC: 1/1/100-1/1/200

IHC: 1/1/50-1/1/100

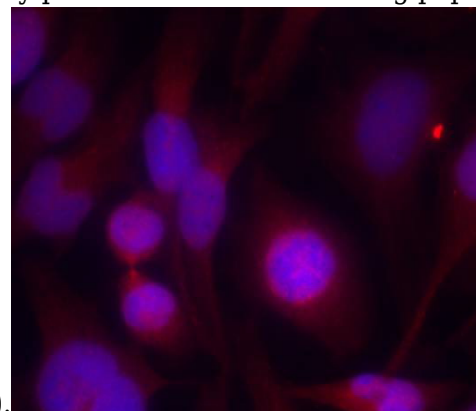
## Validations



Western blot analysis of extracts from 293,3T3 and COS7 cells using HDAC2 (Ab-394) rabbit pAb (1:500 diluted). Predicted band size: 60KDa. Observed band size: 60KDa.



Immunohistochemical analysis of paraffin-embedded human breast carcinoma tissue using HDAC2 (Ab-394) Antibody (left) or the same antibody preincubated with blocking peptide



(right).

Immunofluorescence staining of methanol-fixed HeLa cells using HDAC2 (Ab-394) Antibody .