

STAT5A antibody



Catalog Number: 115692

Product name

STAT5A antibody

Specificity

Human, Mouse; other species not tested.

Antibody description

STAT5A Rabbit Polyclonal antibody. Positive WB detected in NIH/3T3 cells, HeLa cells, HepG2 cells. Positive IHC detected in human cervical cancer tissue, human breast cancer tissue, human lung cancer tissue. Observed molecular weight by Western-blot: 92kd

Preparation

This antibody was obtained by immunization of Peptide (Accession Number: NM_003152). Purification method: Antigen affinity purified.

Formulation

PBS with 0.02% sodium azide and 50% glycerol pH 7.3.

Storage

Store at -20°C. DO NOT ALIQUOT

Clonality

Polyclonal

Ig Type

Rabbit IgG

Applications

ELISA, WB, IHC

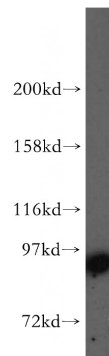
Dilutions

Recommended Dilution:

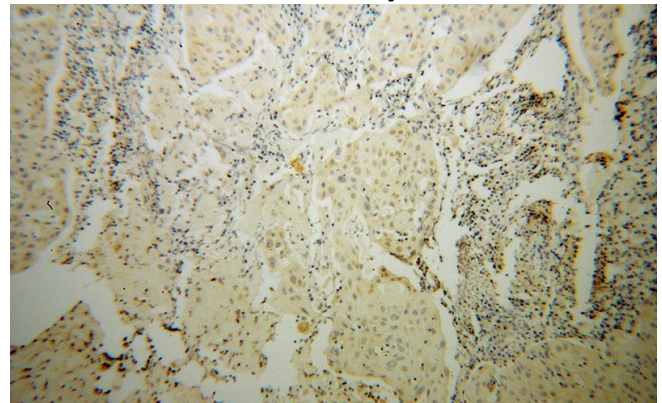
WB: 1:500-1:5000

IHC: 1:20-1:200

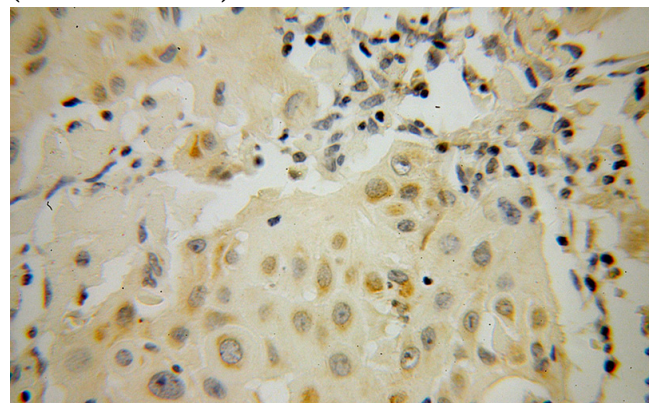
Validations



NIH/3T3 cells were subjected to SDS PAGE followed by western blot with Catalog No:115692(STAT5A antibody) at dilution of 1:400



Immunohistochemical of paraffin-embedded human cervical cancer using Catalog No:115692(STAT5A antibody) at dilution of 1:100 (under 10x lens)



Immunohistochemical of paraffin-embedded human cervical cancer using Catalog

STAT5A antibody



Catalog Number: 115692

No:115692(STAT5A antibody) at dilution of 1:100 (under 40x lens)