

EIF1AX Polyclonal Antibody



Catalog Number: 164692

Product name

EIF1AX Polyclonal Antibody

Specificity

Human, Mouse, Rat

Antibody description

Polyclonal antibody to EIF1AX

Preparation

Antigen: Recombinant fusion protein containing a sequence corresponding to amino acids 10-144 of human EIF1AX (NP_001403.1).

Formulation

PBS with 0.02% sodium azide, 50% glycerol, pH7.3.

Storage

Store at -20°C. Avoid freeze / thaw cycles.

Clonality

Polyclonal

Ig Type

Rabbit IgG

Applications

WB, IHC, IF

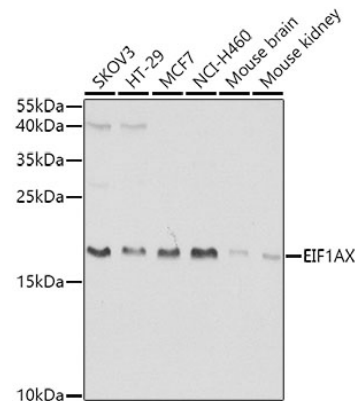
Dilutions

WB 1:200 - 1:2000

IHC 1:100 - 1:200

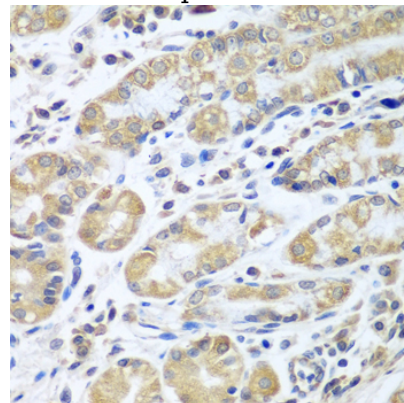
IF 1:50 - 1:200

Validations



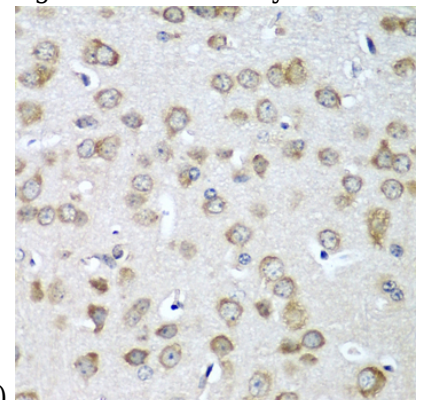
Western blot - EIF1AX Polyclonal Antibody

Western blot analysis of extracts of various cell lines, using EIF1AX antibody at 1:1000 dilution. Secondary antibody: HRP Goat Anti-Rabbit IgG (H+L) at 1:10000 dilution. Lysates/proteins: 25ug per lane. Blocking buffer: 3% nonfat dry milk in TBST. Detection: ECL Basic Kit. Exposure time: 30s.



Immunohistochemistry - EIF1AX Polyclonal Antibody

Immunohistochemistry of paraffin-embedded human stomach using EIF1AX antibody at dilution



of 1:100 (40x lens).

EIF1AX Polyclonal Antibody



Catalog Number: 164692

Immunohistochemistry - EIF1AX Polyclonal Antibody

Immunohistochemistry of paraffin-embedded mouse brain using EIF1AX antibody at dilution of 1:100 (40x lens).